

POWER PRODUCT MOTOR CO.

MINI-JEEP BUILDING PLANS

The mini jeep is designed to sit, two people, you will enjoy building this small vehicle and be rewarded by its performance.

Plan No1 is an assembly of the chassis and wheels

Plan No2 is an assembly of the chassis

Plan No3 is the components of the frame

Plan No4 is the steering axles

Plan No5 is the steering wheel, shaft, rod also the brake and gas rods and pedals

Plan No6 is the brake shaft, brake levers, hood and wind-shield bracket.

Plan No7 is an assembly of the braking system.

Plan No8 is the components of the braking system and sprocket.

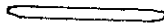
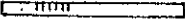
Plan No9 is an assembly of the frame of the body.

Plan No10 is the components of the frame of the body and middle section of the

Plan No11 is the hood and fenders.

Plan No12 is the hood of the motor.

Plan No13 is the seat and floor of the jeep.

Before starting it is important that you study the plans and instructions to familiarize yourself with all the parts first start cutting the parts of the chassis No1-2-3-4-5-8-15 and 16. Flatten ends of tubing No8 and 15 in a vise like so  then bend tubing No1, if you haven't got a bender, make several cuts in the tube at proper distance like so  bend end weld the first bend, repeat the operation for the next bend, flatten the front ends of parts No1, then bend the bumper No5.

Now take a sheet of plywood and draw the chassis full size taking care of lining the cross pieces and bumper at 90 degrees with the side rails No1 and tack weld, check your frame before you finish the welding. Make the rear axle No2 Plan No3 as per drawing, also the front axle No16, weld the 7/8 x 2 3/4 steel bushing on each end of the tubing and in line with each other. When this is done draw two lines 50 1/4 apart at 90 degrees with chassis on your plywood, lay the axles on it and your chassis on top of them line up the front axle at 5 degrees (see plan No2) and tack weld, check center line of rear axle and tack weld. Weld bearing plate 3/16 x 2 x 5" at 10 1/4 inches from center of axle bushing at 35 degrees. Turn chassis bottom up and finish welding. Then weld one 3/4" collar under each side of the frame at 5 1/2" from the center of rear axle. (use brake shaft No 6 to line up collars) Weld two U No25 at the distance shown on plan No3 to hold pedals. Assemble pedal No13 and 14, also brake and gas rod No12. Slip in brake shaft No 6 in collars with brake levers No7, set keys No26 and tighten set screws see plan No7 for assembly of braking system. Slip in the rear wheels and wheel retainer collars No28 and tighten set screws, assemble No18, 19, 20 and 27, assemble motor mount with U bolts No28A, bolt on your motor, couple chain No29, assemble steering axles No30 and 31, slip in front wheels and tighten set screws of retainer collars No28A. Assemble steering rods No11 and 11A plan No5.

Now is the time to make the frame of the body, first cut angle iron No32 plan No9-1" x 1" x 65" long, bend them to fit chassis frame, cut and bend No34 to shape, also No33, 35, and weld them in place according to plan No9, drill holes in body frame for 3/16 self tapping screws 8" apart, put body frame on chassis hold with clamps and mark holes, take body frame away and drill smaller holes for self tapping screws, put back body frame on top of chassis and screw body frame to chassis. Cut a piece of 3/8 plywood No44 to shape as per drawing No13 and bolt to the frame. Now weld part No37 to part No35 at proper distance, bolt on steering bearing No38 to front axle bearing plate slip in steering shaft No10 plan No5, slip in an other bearing No38 in steering shaft and bolt to part No 37, assemble nuts, steering and key, tighten nut. It is time to cover the frame of the body. Cut two pieces of steel for part No39, fold the top edges and drill 3/16 holes, Hold pieces with clamps to the frame, bottom edge even with bottom of chassis and make holes in frame and in No35, to fit self tapping screws, then screw No39 to body. Cut hood No40 Plan No11 and drill 3/16 holes, then bend to shape fit it to front of the jeep, hold it with clamps, drill smaller holes for self tapping screws in No34 and No35 front, and screw hood to frame. Make fenders as per plan No11 and screw them to the hood.

Cut a piece of steel No42 for the motor hood and drill holes and bend to shape, then two pieces of steel No43, fold to shape one left hand, one right hand, weld corners, and screw in No42 with metal screws to the two sides No43, bolt three hinges to No42 and No35 rear. Upholster seat and back No 45 and 46 plan No 13, screw in place. Slip in front and rear wheels No 48, 49 and 50, slip in retainer collars, tighten set screws. Adjust your brakes and test drive your jeep and enjoy yourselves.

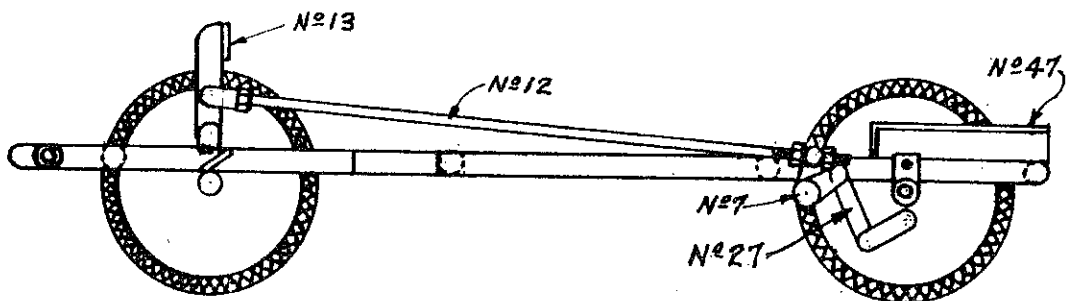
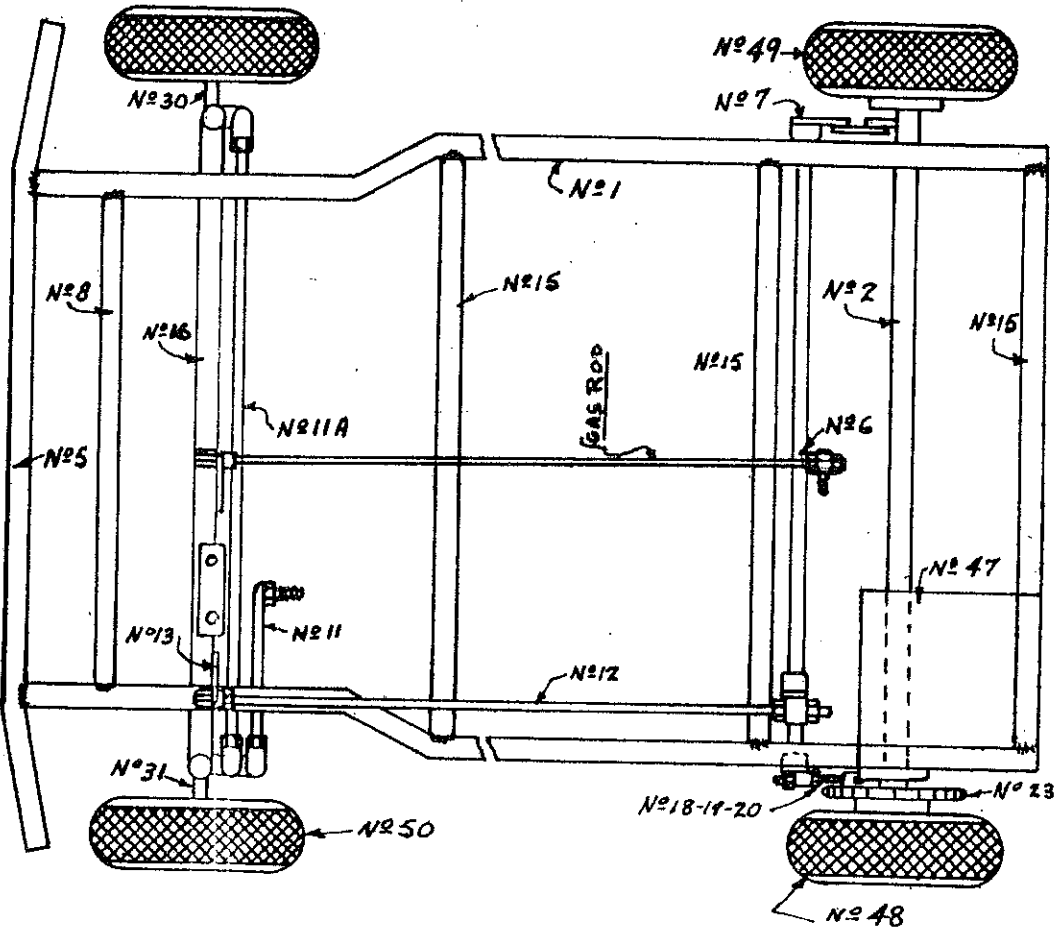
POWER PRODUCTS MOTOR CO.
1223 BORG AVE. TEMPERANCE, MI 48182

MINI-JEEP
PART LIST

PART No	PART LIST	NUMBER OF PIECES
1	Side rails	2
2	Rear axle	
3	End shaft for rear axle	1
4	Arresting plate	
5	Bumper	1
6	Brake shaft	1
7	Brake levers	3
8	Front cross piece	1
9	Steering wheel	1
10	Steering shaft	1
11	Steering rod	1
11A	Secondary steering rod	1
12	Brake and gas control rods	2
13	Left pedal	1
14	Right pedal	1
15	Cross pieces	3
16	Front axle and bearing plate welded	1
17	Upper steering bearing plate	1
18	Brake lever button	
19	Clevis	
20	Adjusting screw and nuts	
21	Back plate	
22	Brake drums	
23	Sprocket	
24	Brake shoe	
25	Steel U for pedals	2
26	3/4 inch brake shaft collars	4
27	Brake link With No 18, 19, and 20	1
28	Retainer collars	6
28A	U bolts for motor mount 5/16 x 3 3/4"	3
29	Driving chain	1
30	Left steering axle	1
31	Right hand steering axle	1
32	Body side rails	2
33	Rear angle iron	1
34	Front hood support	1
35	Middle and rear hood supports	2
36	Automatic clutch For 3/4 Dia. shaft only	1
37	Wind-shield frame	1
38	Steering shaft bearings	2
39	Body side	2
40	Body steel for hood	1
41	Front and rear fenders	4
42	Body steel for motor hood	1
43	Body steel for motor hood sides	2
44	Plywood floor	1
45	Seat	1
46	Seat back	1
47	Motor mounting plate	1
48	Rear wheel complete 4.10 x 3.50 x 5" tire with sprocket and brake assembly	1
49	Rear wheel complete 4.10 x 3.50 x 5" tire with brake assembly	1
50	Front wheel complete 4.10 x 3.50 x 5" tire ball bearing mounted	2
51	5/16 x 1 1/4" cap screws	14
52	Front axle cap screws	2

POWER PRODUCTS MOTOR CO.
1223 BORG AVE. TEMPERANCE, MI 48182

MINI-JEEP
PLAN NO. 1

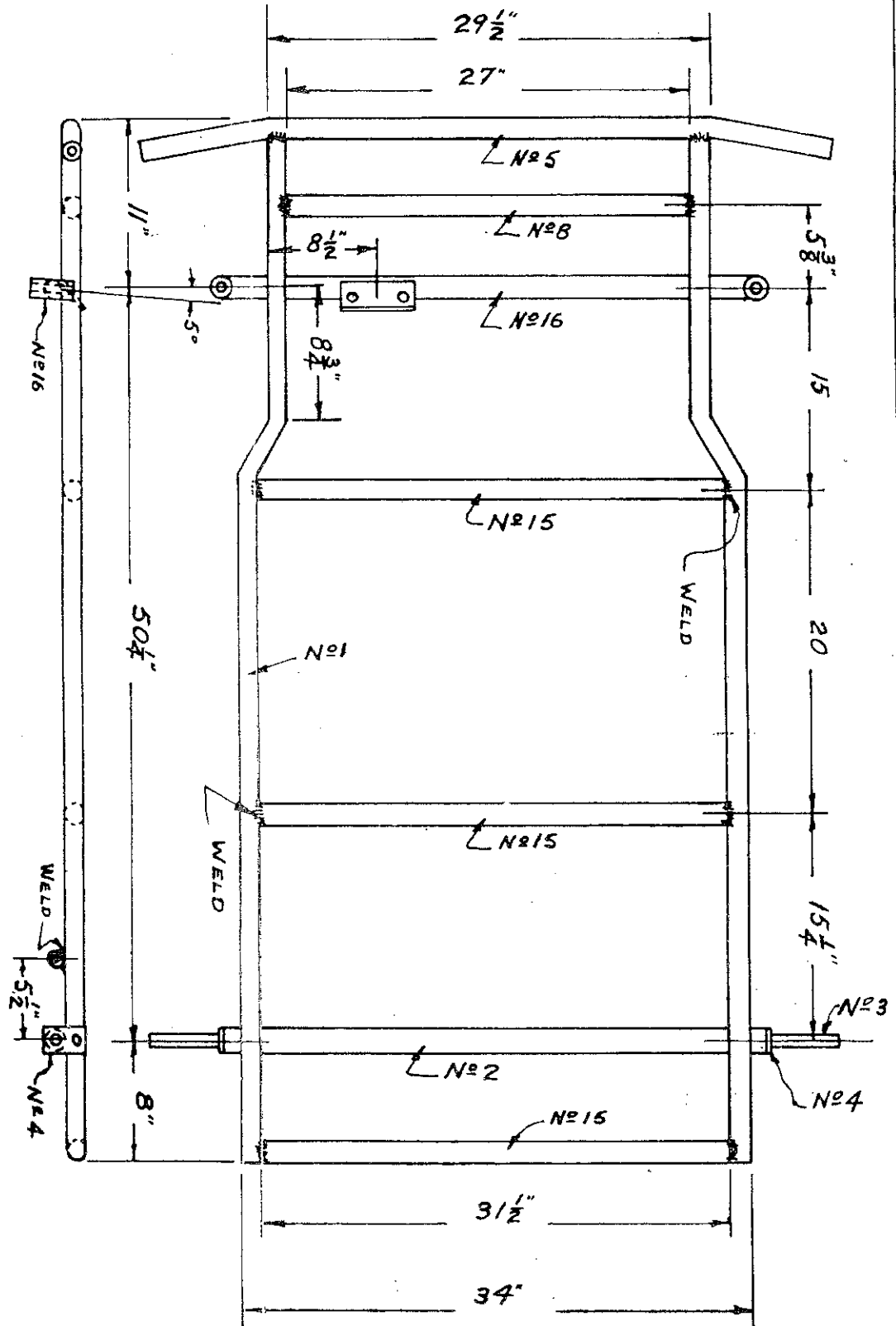


POWER PRODUCTS MOTOR CO.

1223 BORG AVE. TEMPERANCE, MI 48182

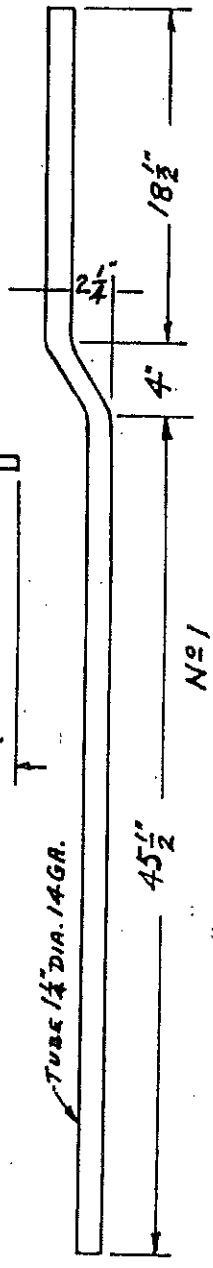
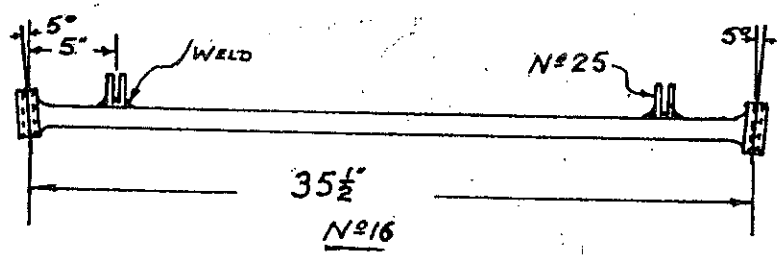
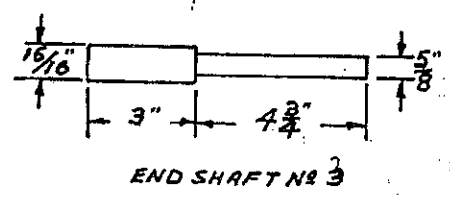
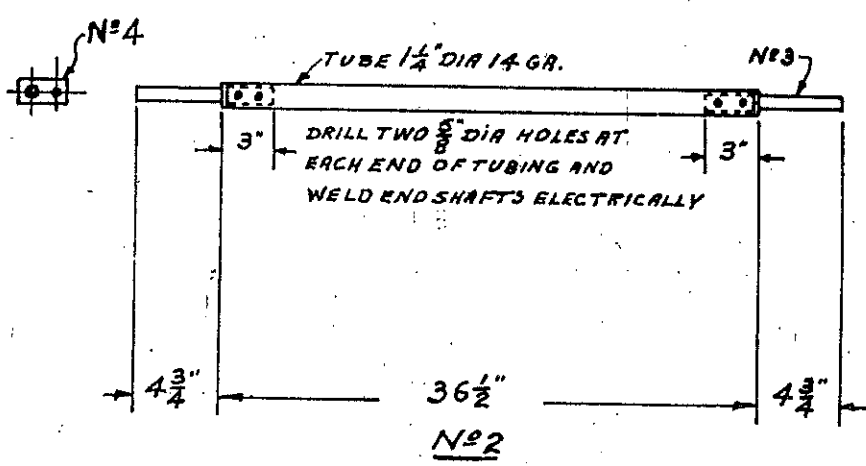
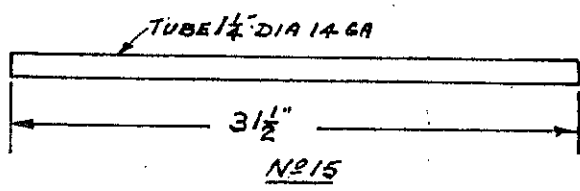
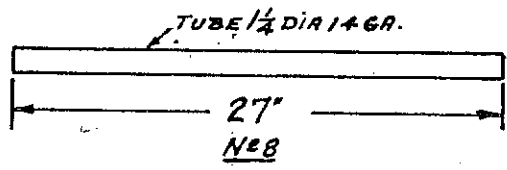
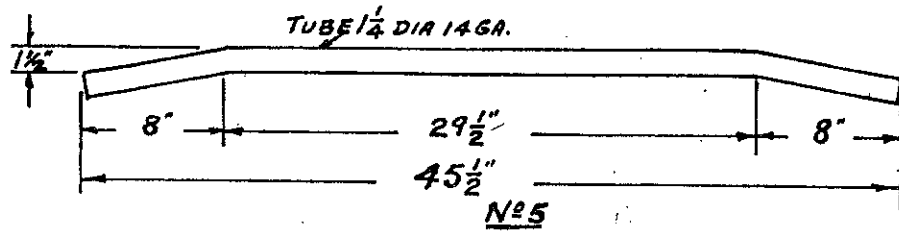
MINI-JEEP

PLAN NO. 2



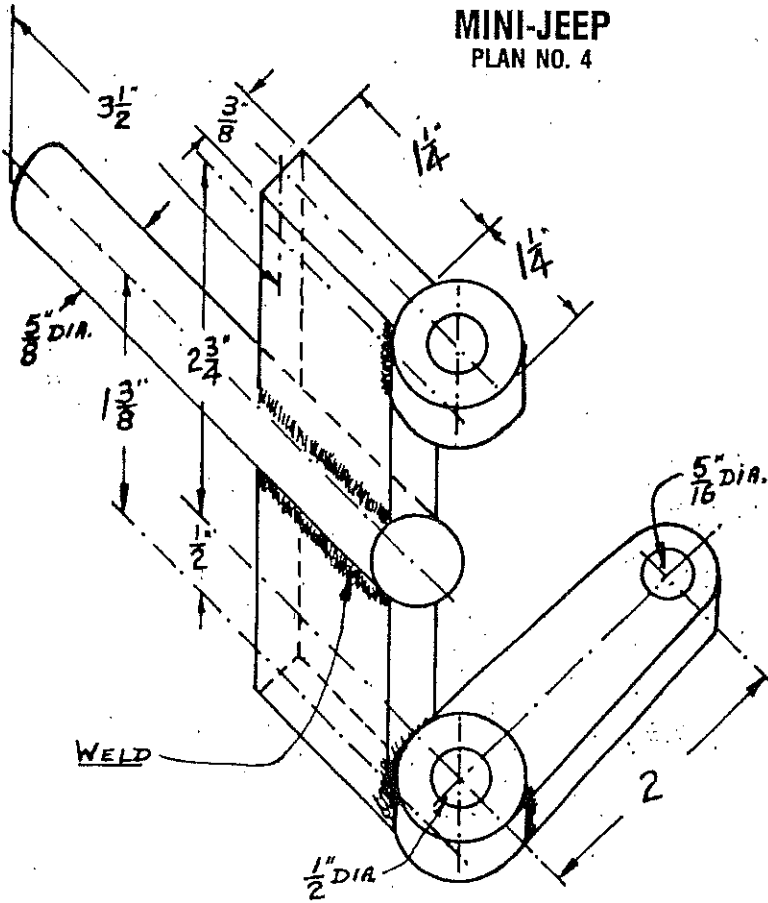
POWER PRODUCTS MOTOR CO.
1223 BORG AVE. TEMPERANCE, MI 48182

MINI-JEEP
PLAN NO. 3

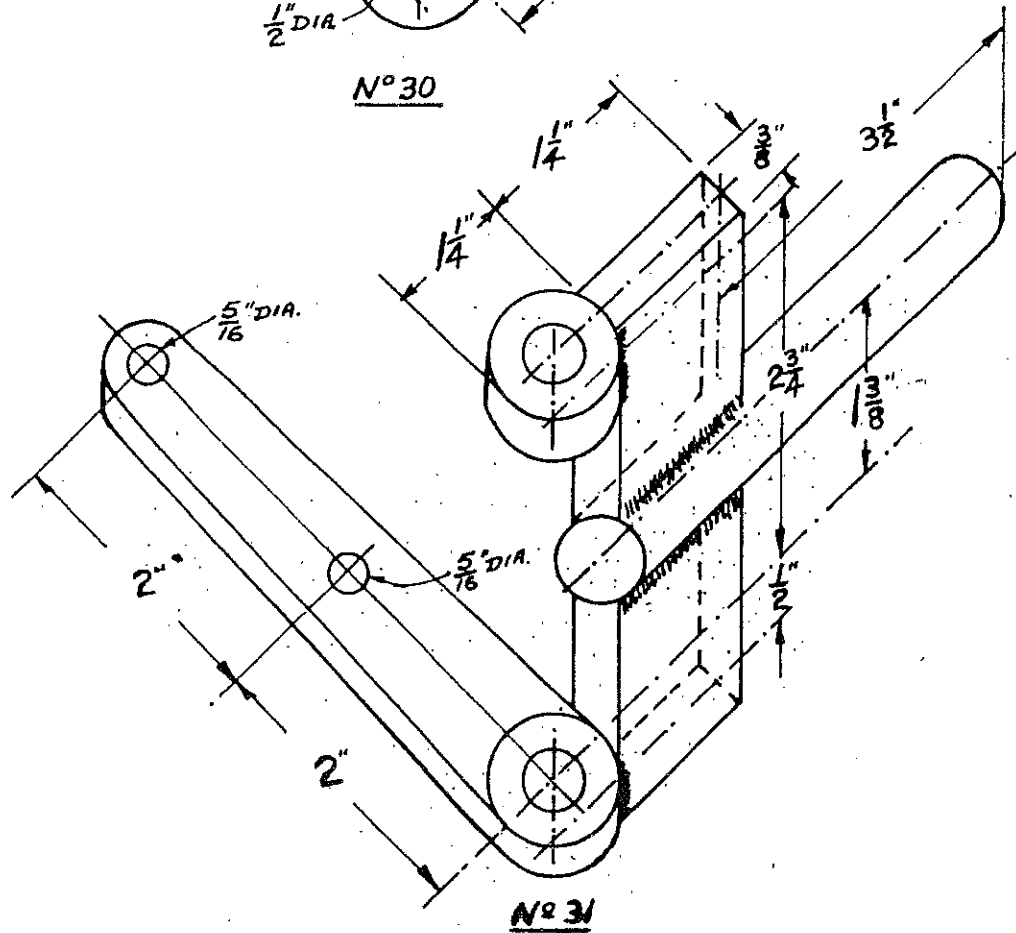


POWER PRODUCTS MOTOR CO.
1223 BORG AVE. TEMPERANCE, MI 48182

MINI-JEEP
PLAN NO. 4



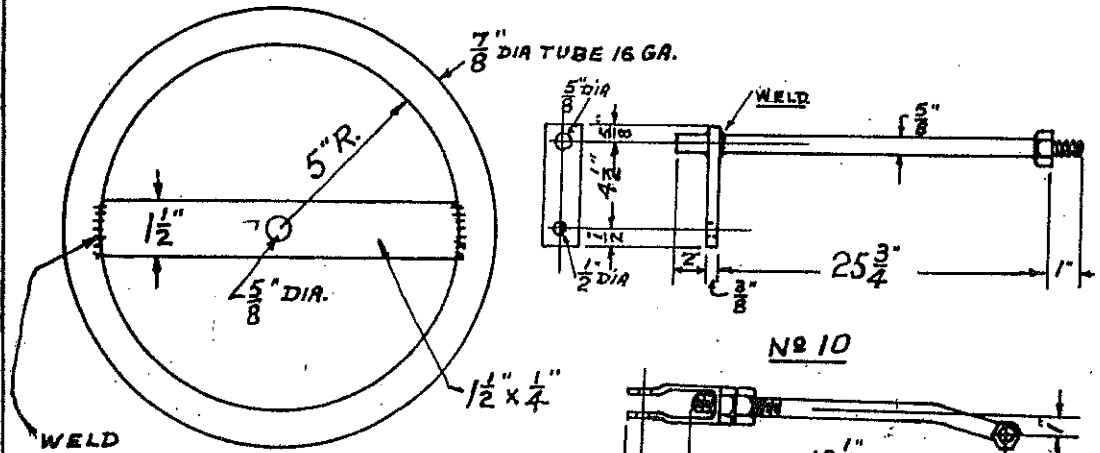
No 30



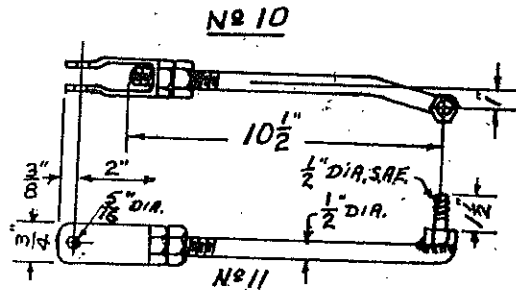
No 31

POWER PRODUCTS MOTOR CO.
1223 BORG AVE. TEMPERANCE, MI 48182

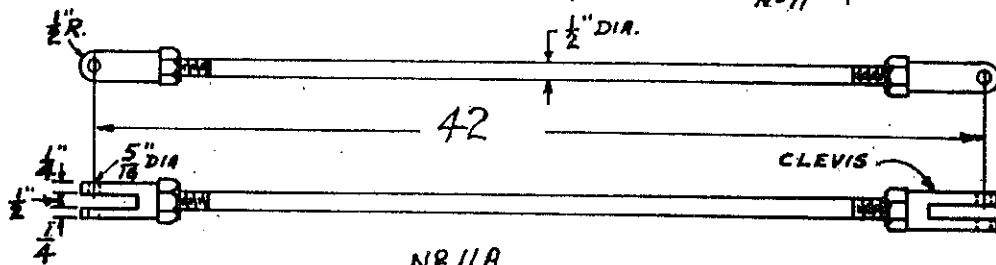
MINI-JEEP
PLAN NO. 5



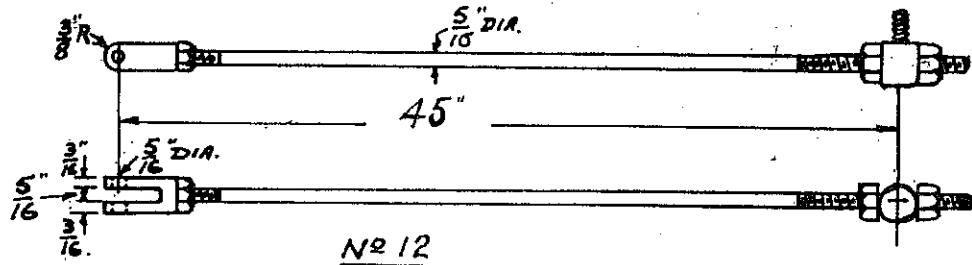
NR 9



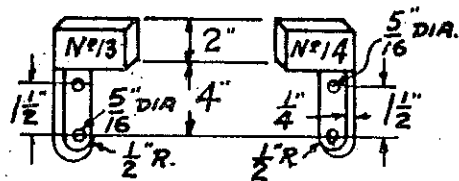
NR 11



NR 11A

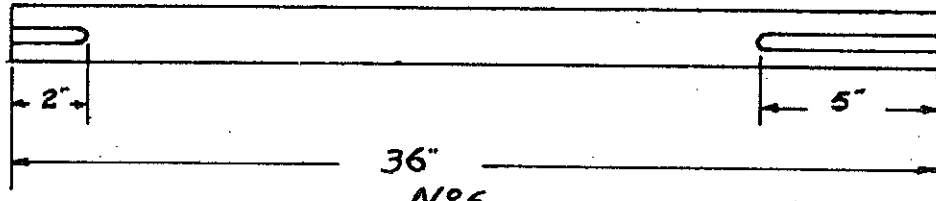


NR 12

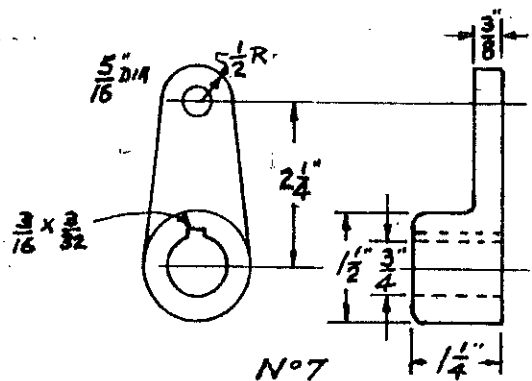


POWER PRODUCTS MOTOR CO.
1223 BORG AVE. TEMPERANCE, MI 48182

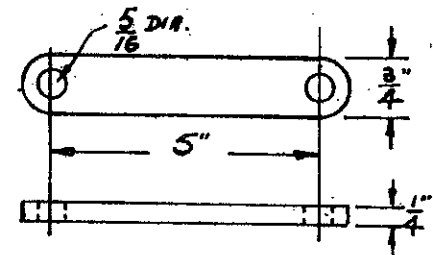
MINI-JEEP
PLAN NO. 6



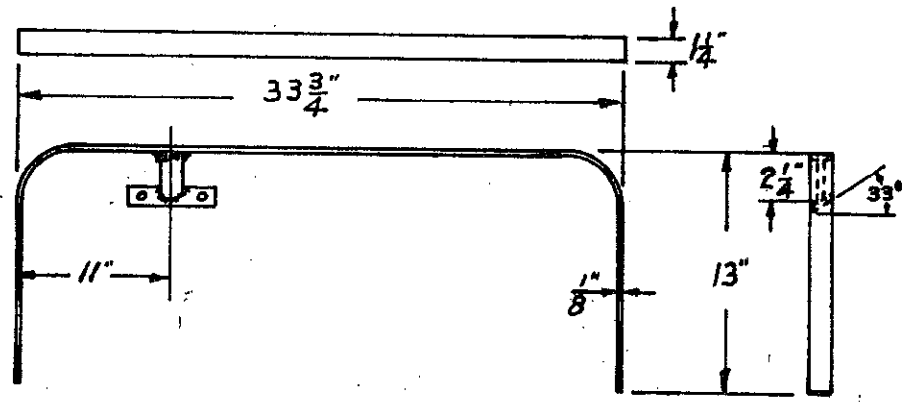
N^o6



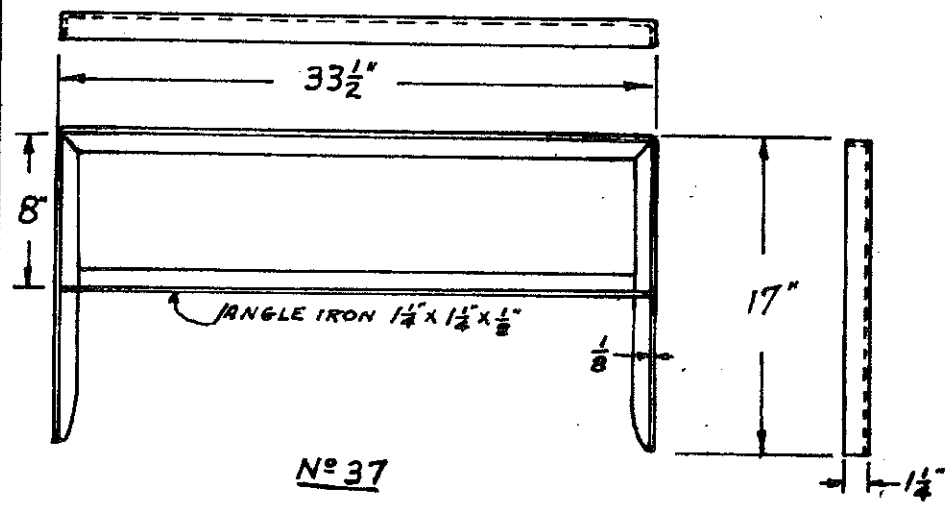
N^o7



N^o27



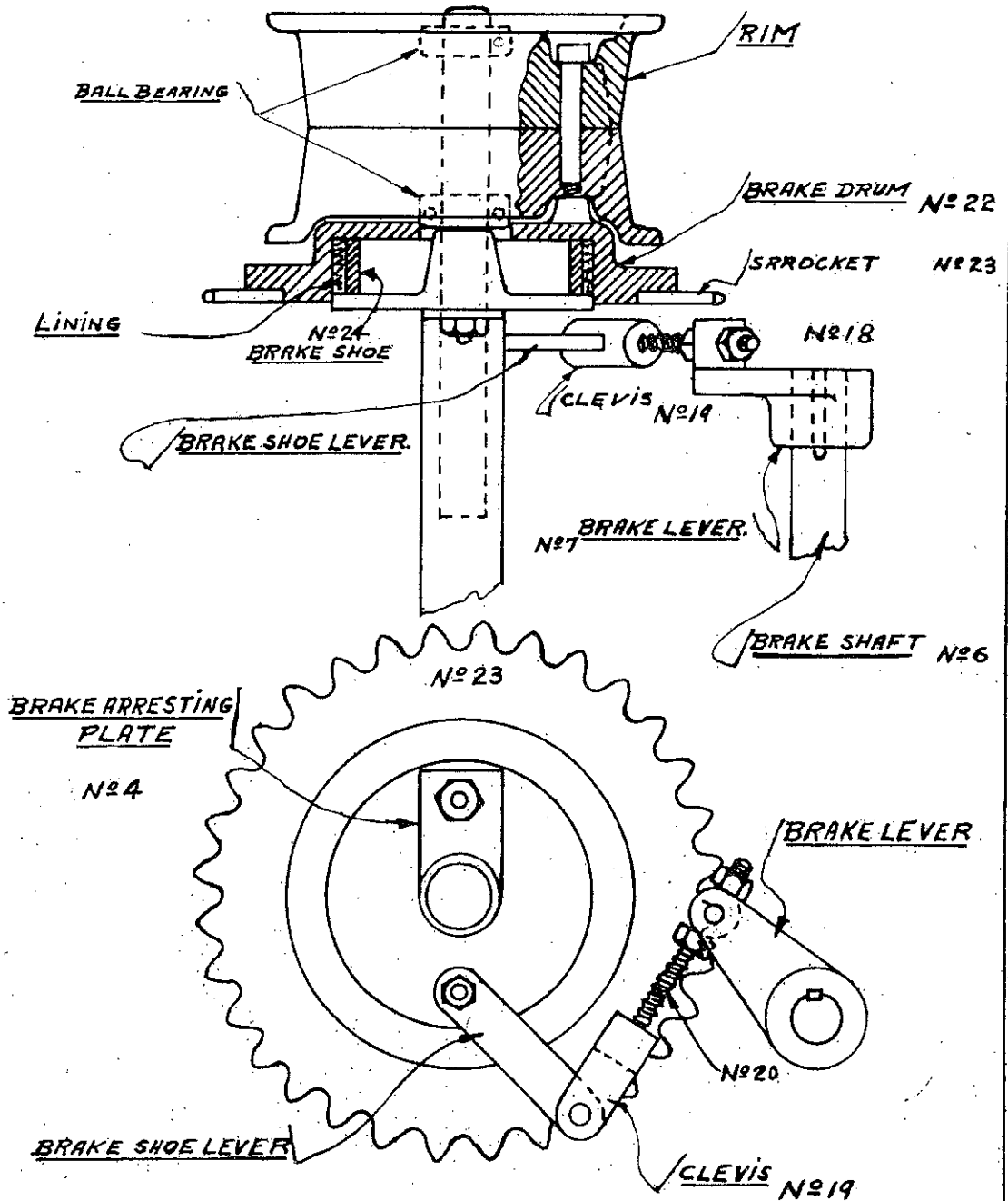
N^o35



N^o37

POWER PRODUCTS MOTOR CO.
1223 BORG AVE. TEMPERANCE, MI 48182

MINI-JEEP
PLAN NO. 7

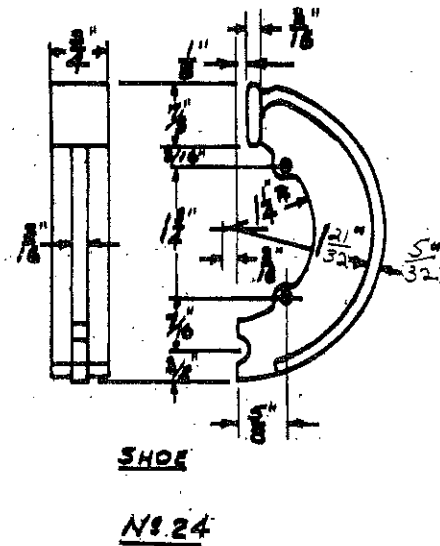
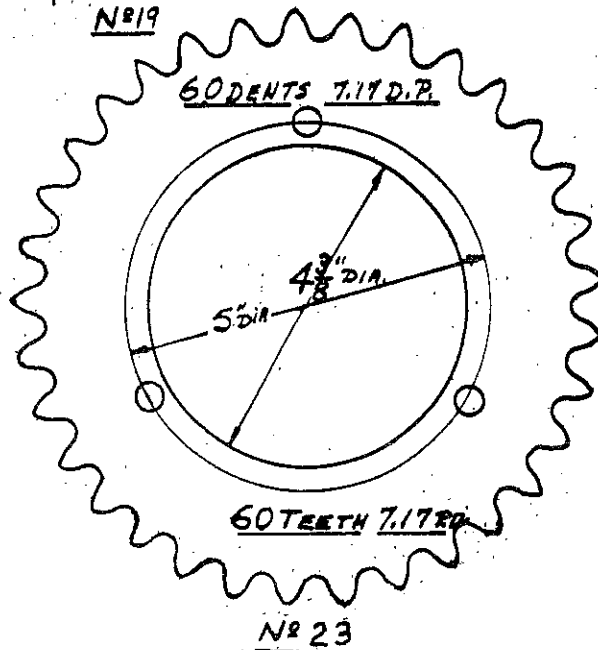
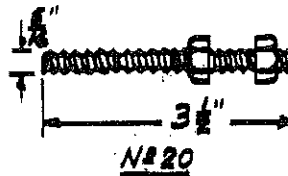
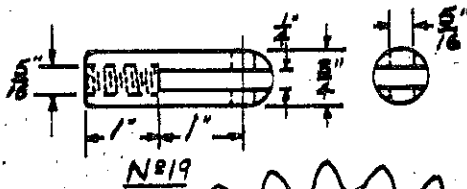
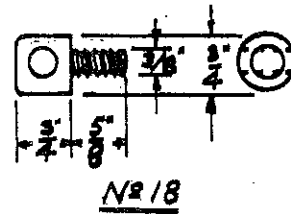
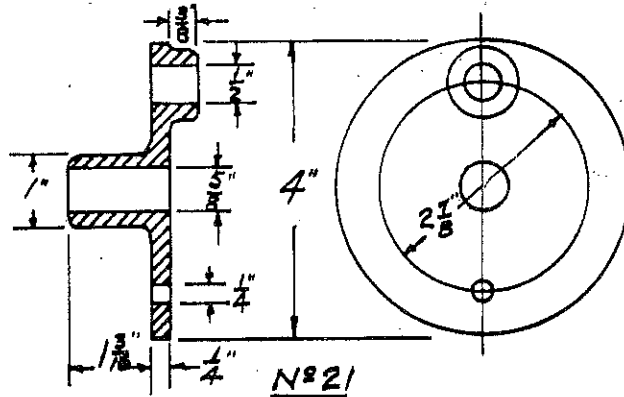
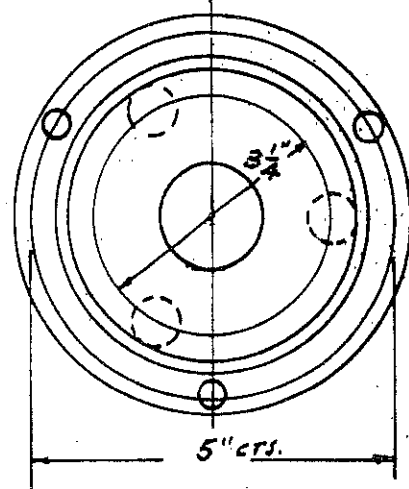
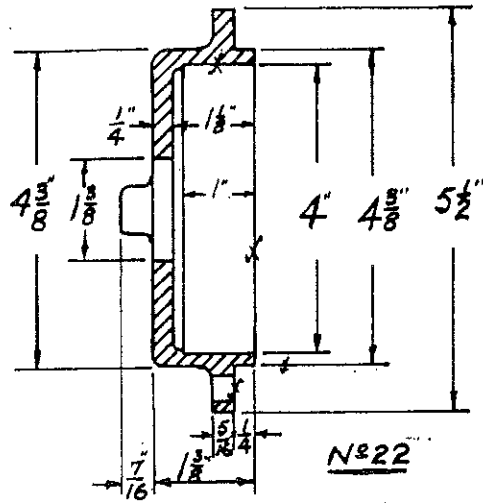


POWER PRODUCTS MOTOR CO.

1223 BORG AVE. TEMPERANCE, MI 48182

MINI-JEEP

PLAN NO. 8

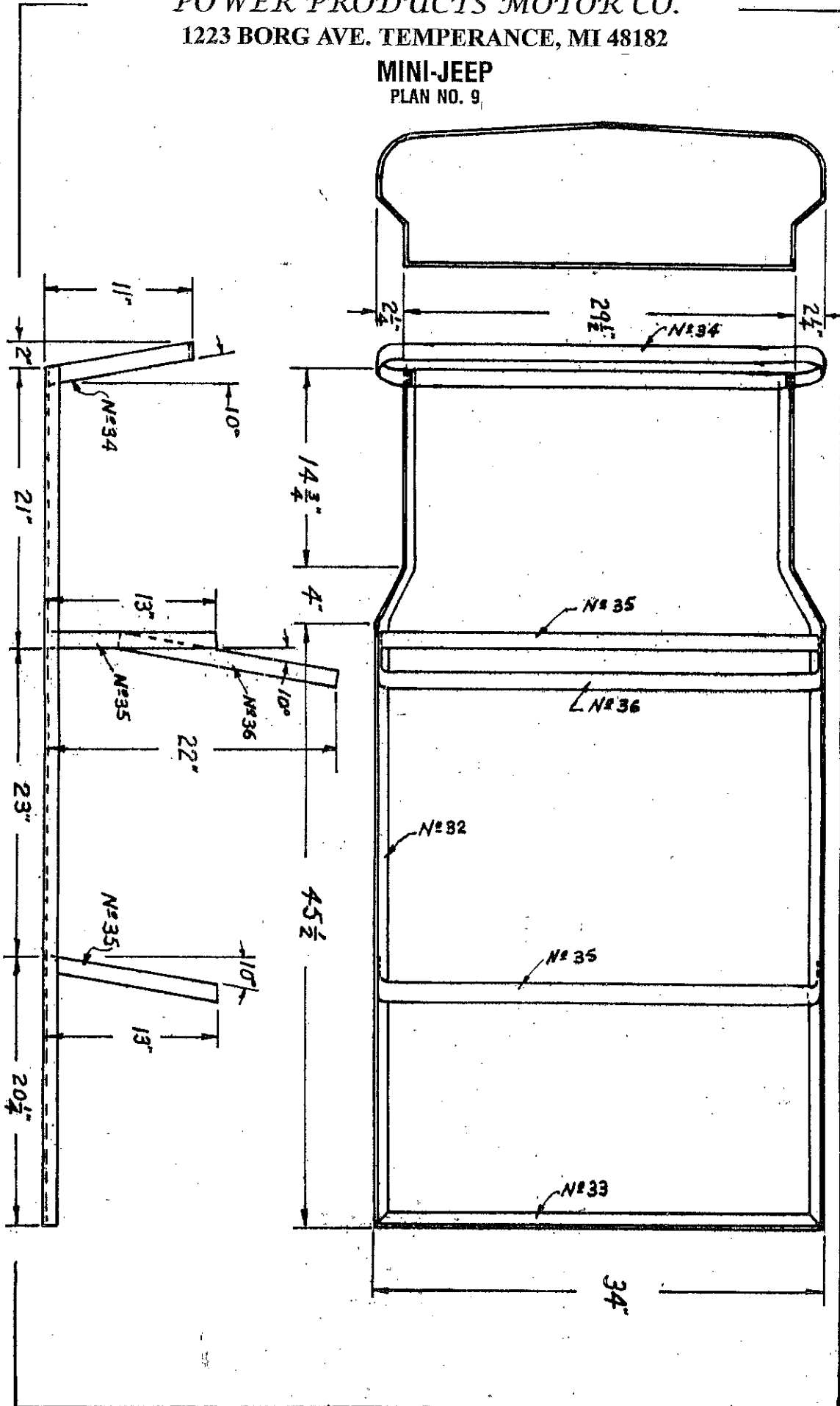


POWER PRODUCTS MOTOR CO.

1223 BORG AVE. TEMPERANCE, MI 48182

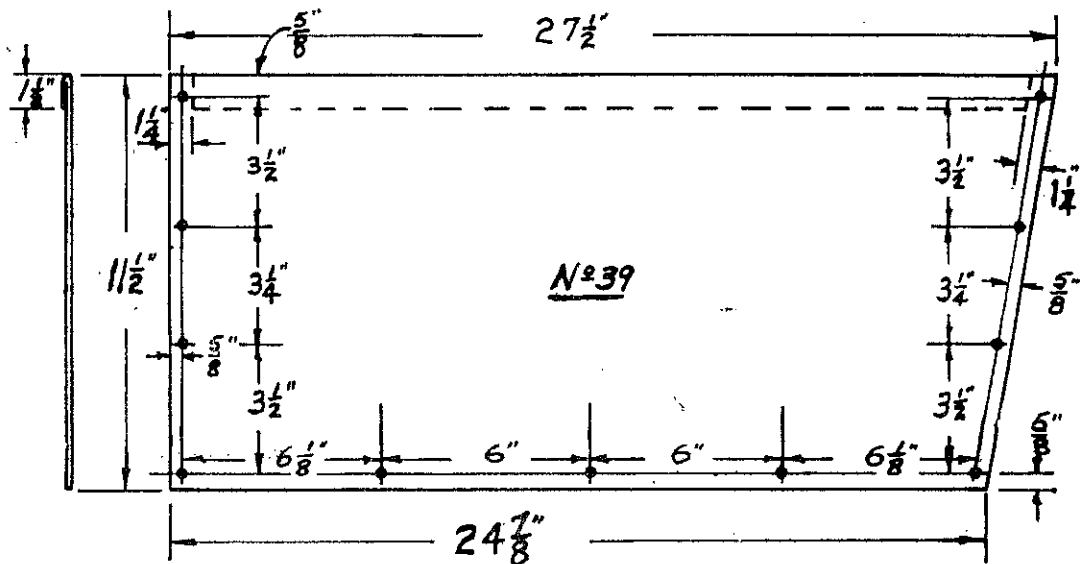
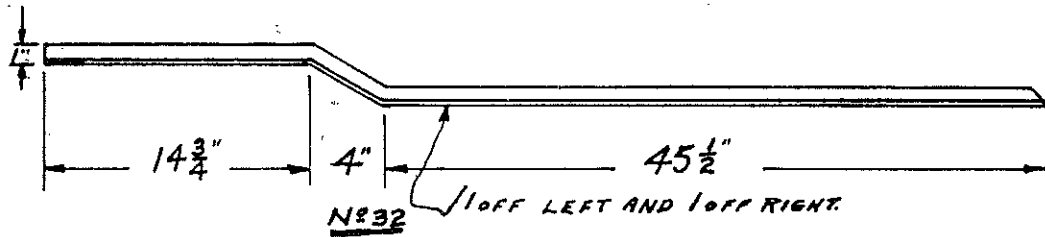
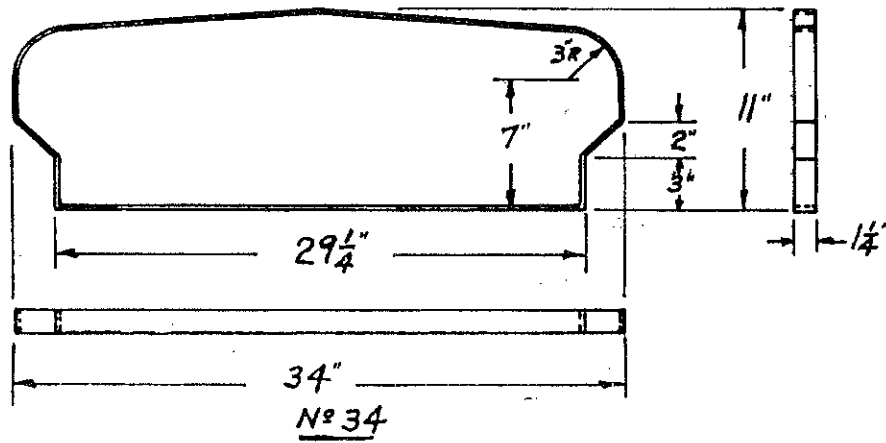
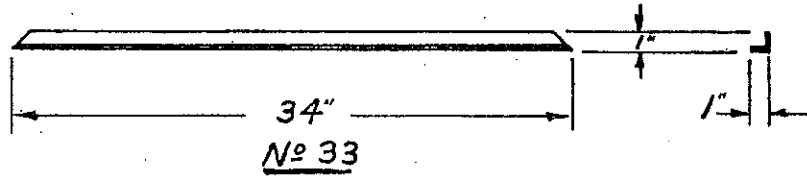
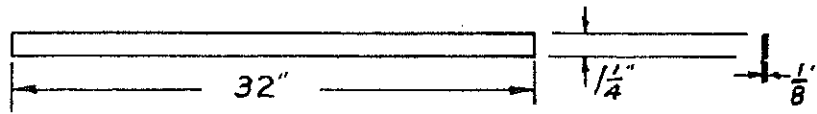
MINI-JEEP

PLAN NO. 9



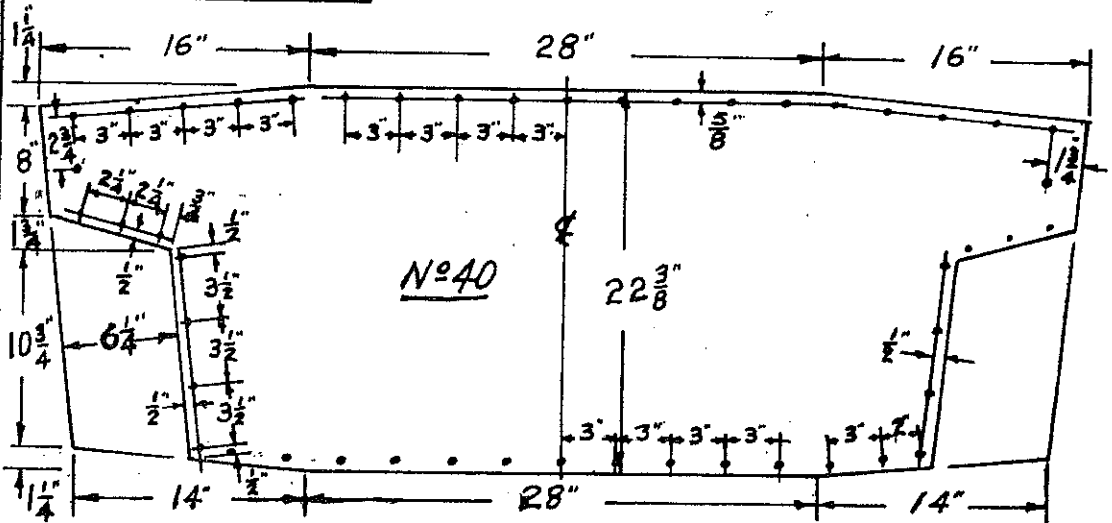
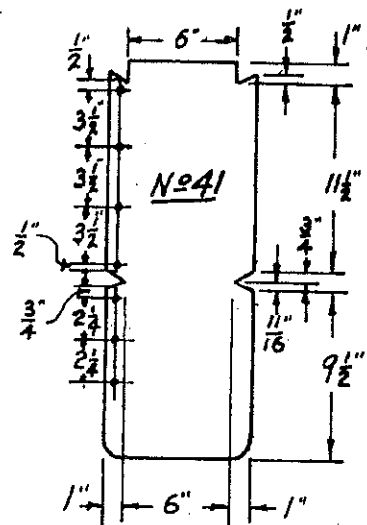
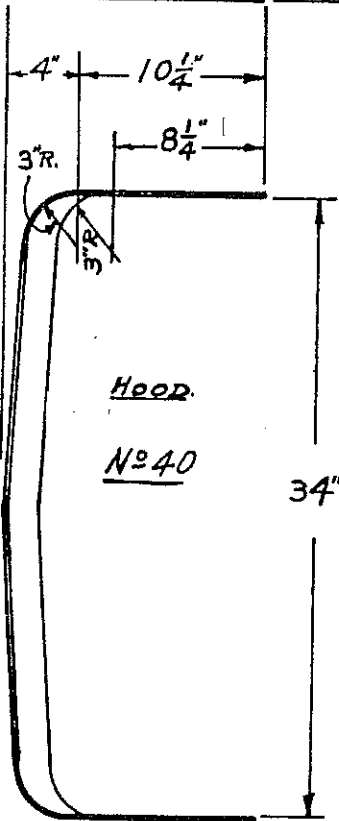
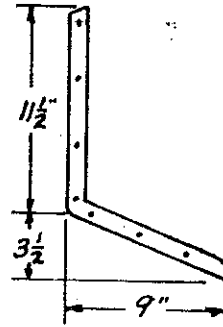
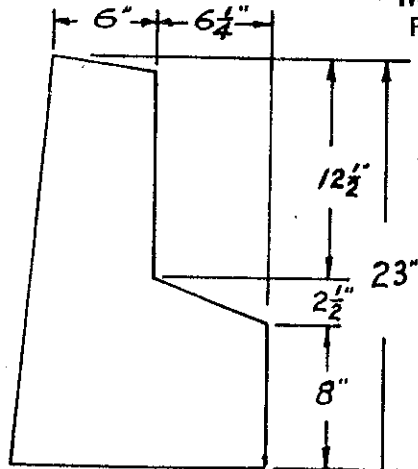
POWER PRODUCTS MOTOR CO.
1223 BORG AVE. TEMPERANCE, MI 48182

MINI-JEEP
PLAN NO. 10



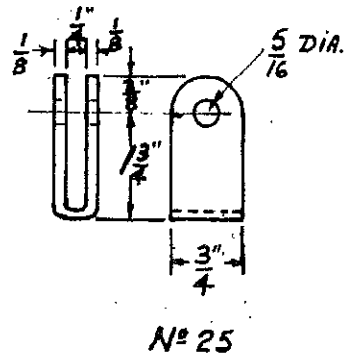
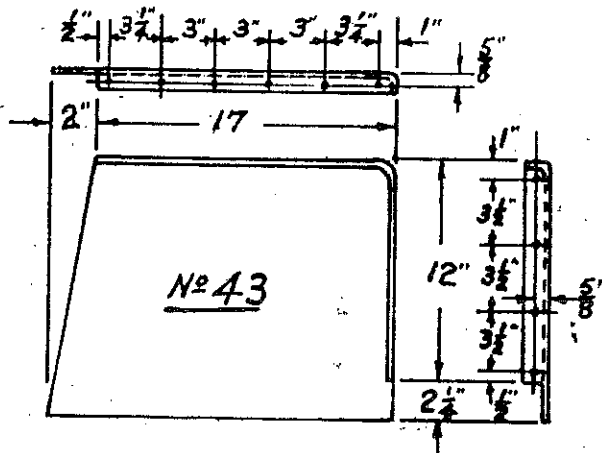
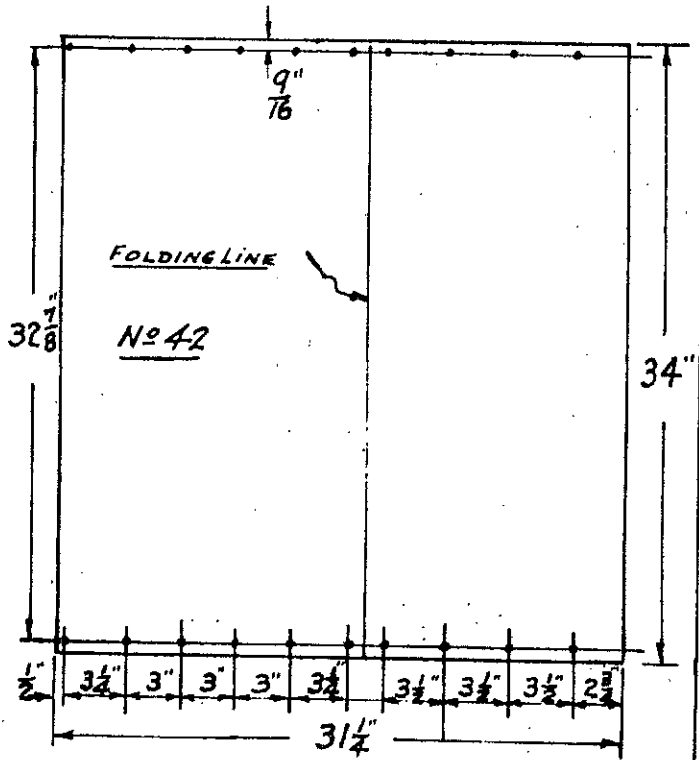
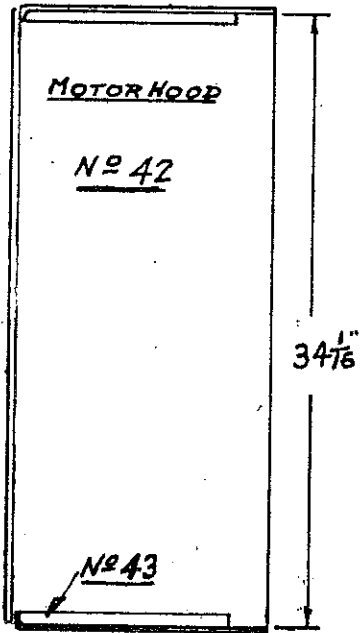
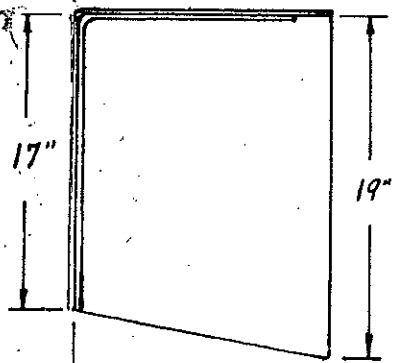
POWER PRODUCTS MOTOR CO.
1223 BORG AVE. TEMPERANCE, MI 48182

MINI-JEEP
PLAN NO. 11



POWER PRODUCTS MOTOR CO.
1223 BORG AVE. TEMPERANCE, MI 48182

MINI-JEEP
PLAN NO. 12



POWER PRODUCTS MOTOR CO.
1223 BORG AVE. TEMPERANCE, MI 48182

MINI-JEEP
PLAN NO. 13

