

MINI VEHICULE PLANS

SOAP BOX CART INSTRUCTION

This cart is unique in its design, because it works on the same principle as a car for its steering gear and has a disk brake, it is made of hard wood and plywood except for a few hardware which can be made at a machine shop, some parts can be obtained from the hardware store. If you want to motorize it by electricity and battery, you can obtain drawings from us at the price of \$3.00 per set. The cost of the wood is approximately \$75.00. Before you start to make this project it is important that you understand the plans, it is advisable that you read the instruction and plans at the same time to be familiar with them. First you have an assembly drawing Plan No1 with all the parts numbered, second an assembly drawing of the frame Plan No2. Cut No 1-2-3-4-5-6 and 7 to size, make the necessary notches Plan No3 and 4, Drill all the holes at assembly to make sure that the frame is well adjusted and tight, then screw the floor No4 to the frame. Then cut wood for the brake pedal Plan No5, part No8 and drill the necessary holes and assemble together and fix to the frame with a 5/16" x 3" bolt, also cut wood disk for brake Plan No5 part No9 and bolt flange No10 with four bolts No11 (1/4 x 1 1/2"). Assemble the rear axle as per drawing No8, drill the holes for the spring pins and bolt bearings No23 to the frame and bolt wheels to part No24. Then cut wood friction pads Plan No5 part No12 and drill 1/4" holes. Get your shop to make the brake pulley and fixture No13 Plan No5 (you might be able to get this fixture from a sail boat place), cut part No14 Plan No6 and drill holes. Also assemble the brake pads and hinges to the frame. Steering shaft support No15 and collar No22, can be bought. Then cut steering rod No17 and lever No21, bearings No18 and collar No22, can be bought. Then cut steering knuckles from wood and drill necessary holes, drill and drive shaft No26 into the 1/2" hole, then drill a 1/4" hole through the wood and shaft No26, then countersink for a 1/4 x 2" Bolt. Cut the two sides Plan No9 part No27, also tops No28 and 29, Make frame No30 and 31 also cut on band saw part No32, Make seat No33 and back No34 and get them upholstered and screw to the frame and body. To assemble the body you have to screw a moulding to the edge of No27, then screw the frames No30 and 31 to the sides, tie the middle of the sides with a cord and bend the ends together and screw part No32 at both ends, it is advisable to wet with hot water at bending places. Put the body on the frame and screw to part No6. Assemble steering shaft and rod, also steering bar No35, then attach the brake cable to the wood lever and the eye bolt No37.

BOITE A SAVON INSTRUCTION

Cette petite voiture est unique parce que pour sa direction et son frein a disque elle ressemble a une automobile. Elle est faite de bois dur et contreplaqué excepté des pièces qui peuvent être fait par un atelier d'usinage, quelques pièces peuvent être obtenues de la quincaillerie. Si vous voulez la motoriser par l'électricité et batterie, vous pouvez obtenir les plans de nous au prix de \$3.00 le set. Le coût du bois est de \$75.00 environ. Avant de commencer ce projet il est important que vous lisez les instructions et plans en même temps pour se familiariser avec ces derniers. Le dessin No1 est un plan d'assemblage avec pièces numérotées, le plan No2 est un dessin d'assemblage pour le bâti. Coupez les No1-2-3-4-5-6 et 7 de bonne longueur ainsi que les entailles plan No3 et 4, percez tous les trous a l'assemblage afin d'être certain que le bâti soit bien ajusté et boulonné, ensuite vissez le plancher No4 au bâti. Coupez le bois de la pédale du frein plan No5 pièce No8 et percez les trous nécessaires a l'assemblage et boulonnez au bâti avec un boulon de 5/16 x 3", aussi coupez le disque de bois dur pour frein plan No5 pièce No9 et boulonnez la bride No10 avec 4 boulons No11 (1/4 x 1 1/2"). Assemblez l'essieu arrière comme le dessin No8, percez les trous pour les goulons a ressort et boulonnez les coussinets No23 au bâti ainsi que les roues No35 aux pièces No24 ensuite coupez les coussins en bois dur du frein plan No5 pièce No12 et percez les trous de 1/4". Faites usiner la poulie du frein et fixture No13 plan No5 (vous pouvez obtenir cette fixture au magasin de bateau a volée) Coupez les pièces No14 plan No6 et percez les trous, aussi assemblez les coussins du frein et pentures au bâti, Les supports de l'arbre de direction No15 et 16 devront être obtenus de l'atelier d'usinage ainsi que la timonnerie No17 et le levier No21, les coussinets No18 et bague No22 peuvent être achetés. Ensuite coupez les rotules de direction en bois dur et percez les trous nécessaires, enfoncez l'arbre No26 dans le trou de 1/2" et percez un trou de 1/4" au travers du bois et l'arbre No26, ensuite fraisez pour un boulon de 1/4" x 2", coupez les deux côtés plan No9 pièce No27 ainsi que les dessus No28 et 29, faites les bâtis No30 et 31, ensuite coupez a la scie a ruban les pièces No32 taillez le siège No33 et le dossier No34 et rembourrez les et fixez au châssis. Pour assembler la carrosserie vous devez visser une moulture sur les bords du No27, ensuite les bâtis No30 et 31 aux côtés No27, Attachez le milieu des côtés avec de la corde et pilez les bouts ensemble et vissez les pièces No32 aux Deux bouts, il est important de moultier les côtés avant de piler mettez la carrosserie sur le bâti et vissez a la pièce No6, Assemblez l'arbre de direction et la timonnerie barre No36, ensuite attachez le cable du frein aux leviers et crochet fileté No37. Mettez des goupilles ou il est nécessaire.

POWER PRODUCTS MOTOR CO.

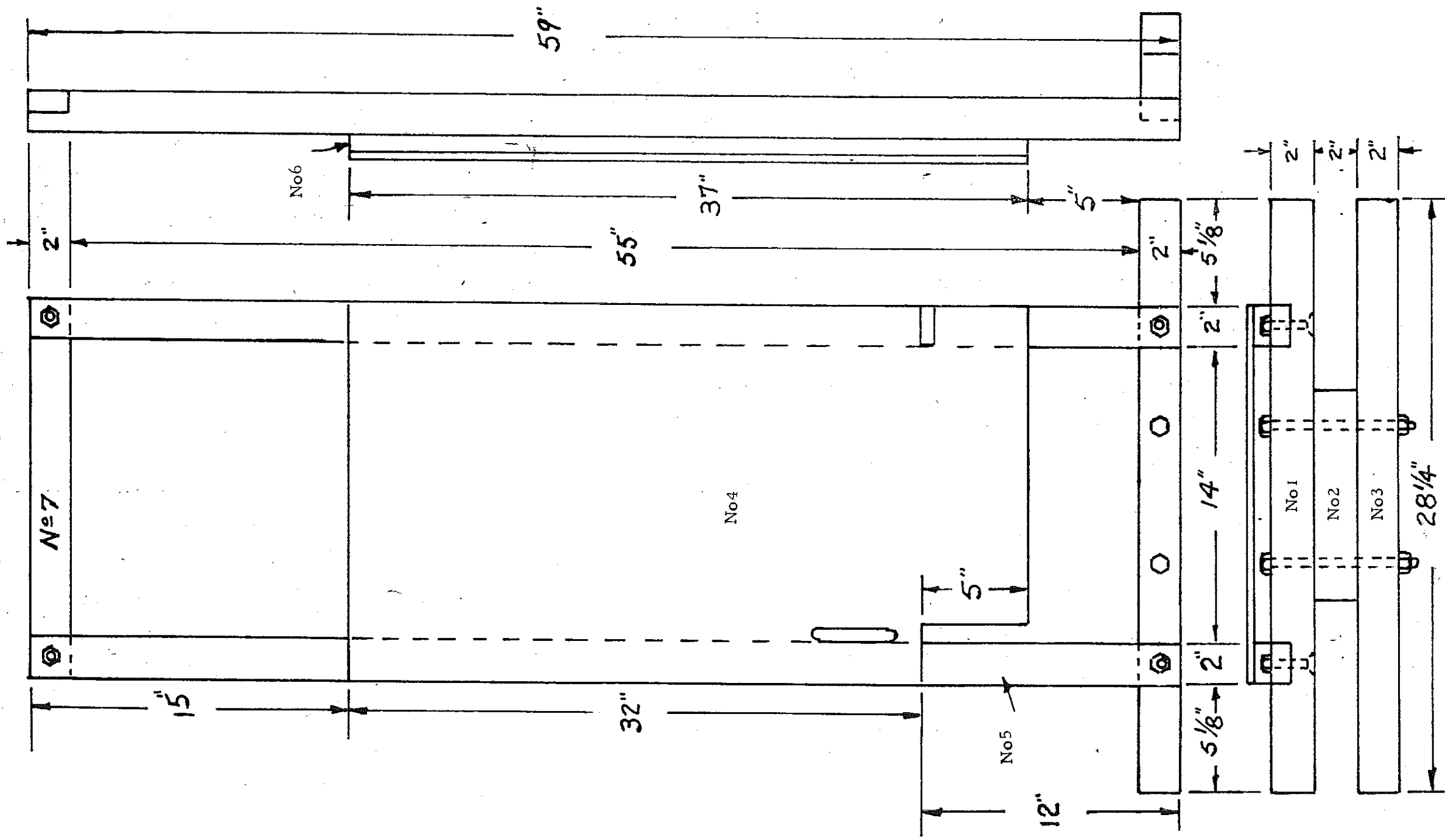
1223 BORG AVE. TEMPERANCE, MI 48182

Soap Box Cart LIST OF MATERIALS

PART NO	DESCRIPTION	Number of Parts
1	Upper front axle cross bar	1
2	Front spacer	1
3	Lower front axle cross bar	1
4	Floor	1
5	Side of frame	2
6	attach of body	2
7	Rear cross bar	1
8	Brake pedal	1
9	Disk brake	1
10	Flange	2
11	1/4 x 1 1/2" bolt	4
12	Brake pads	2
13	Brake flxture	1
14	Brake lever	2
14A	Brake hinges	2
15	Lower steering shaft support	1
16	Upper steering shaft support	1
17	Steering rod	1
18	Steering bearings	2
19	Steering wheel	1
20	Steering shaft	1
21	Steering lever	1
22	Steering collar	1
23	Rear axle	1
23A	Rear axle bearings	2
24	Rear wheel drive adapter	2
25	Steering knuckle	2
26	Front axle	2
27	Side of body	2
28	Front top of body	1
29	Rear top of body	1
30	Front frame of body	1
31	Rear frame of body	1
32	Front and rear bumper	2
33	Seat	1
34	Seat back	1
35	Wheels	4
36	Steering bar	1
37	Brake pedal eye bolt	1

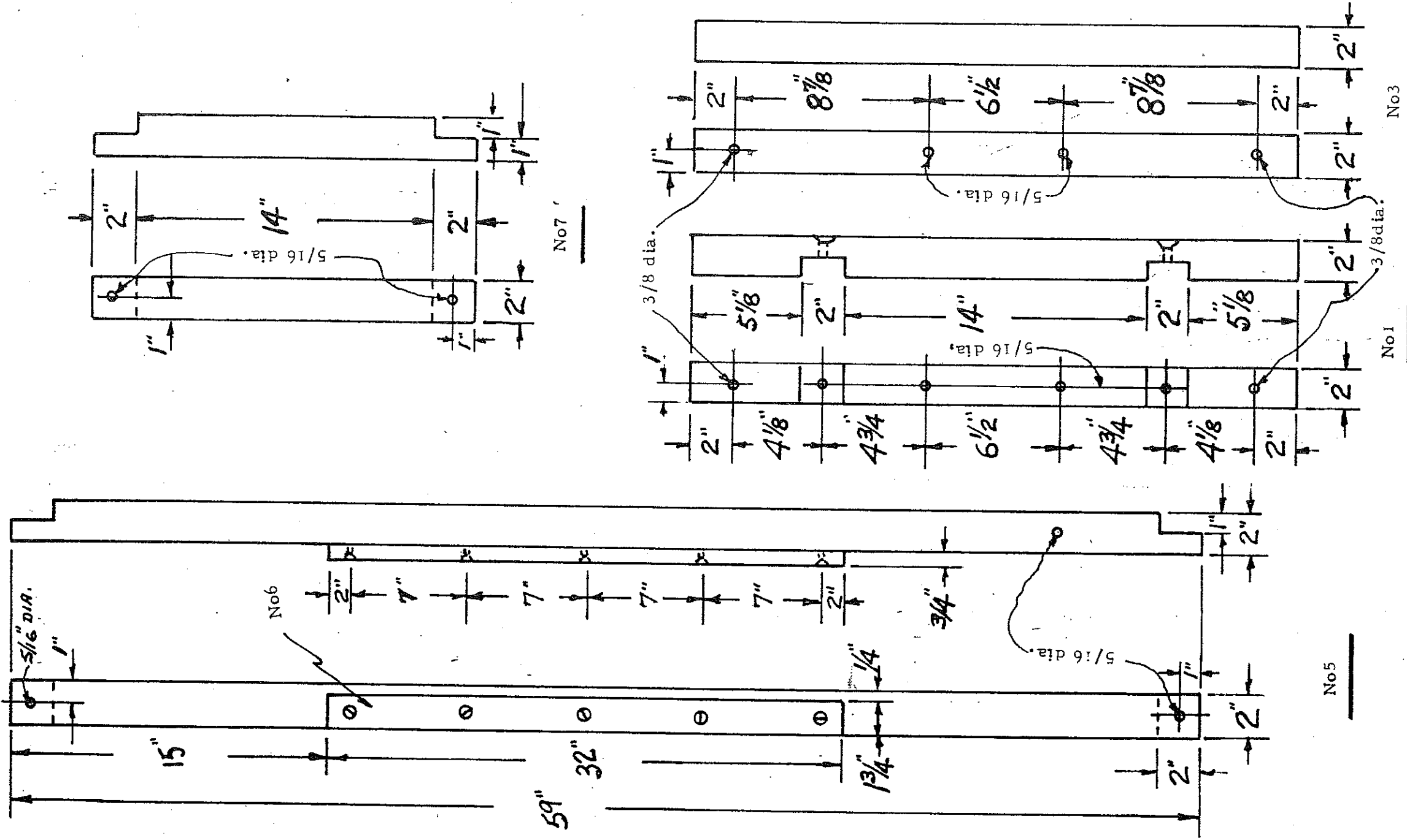
POWER PRODUCTS MOTOR CO.
1223 BORG AVE. TEMPERANCE, MI 48182

PLAN NO. 2



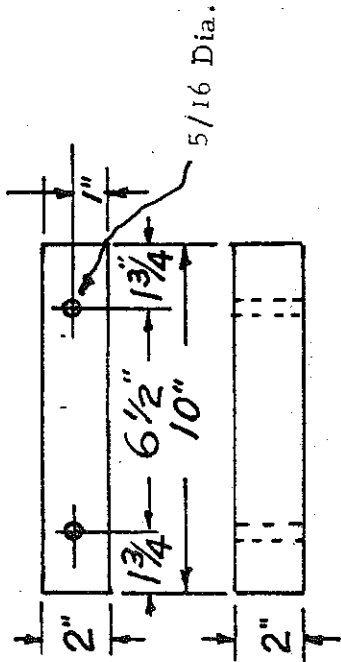
POWER PRODUCTS MOTOR CO.
1223 BORG AVE. TEMPERANCE, MI 48182

PLAN NO. 3

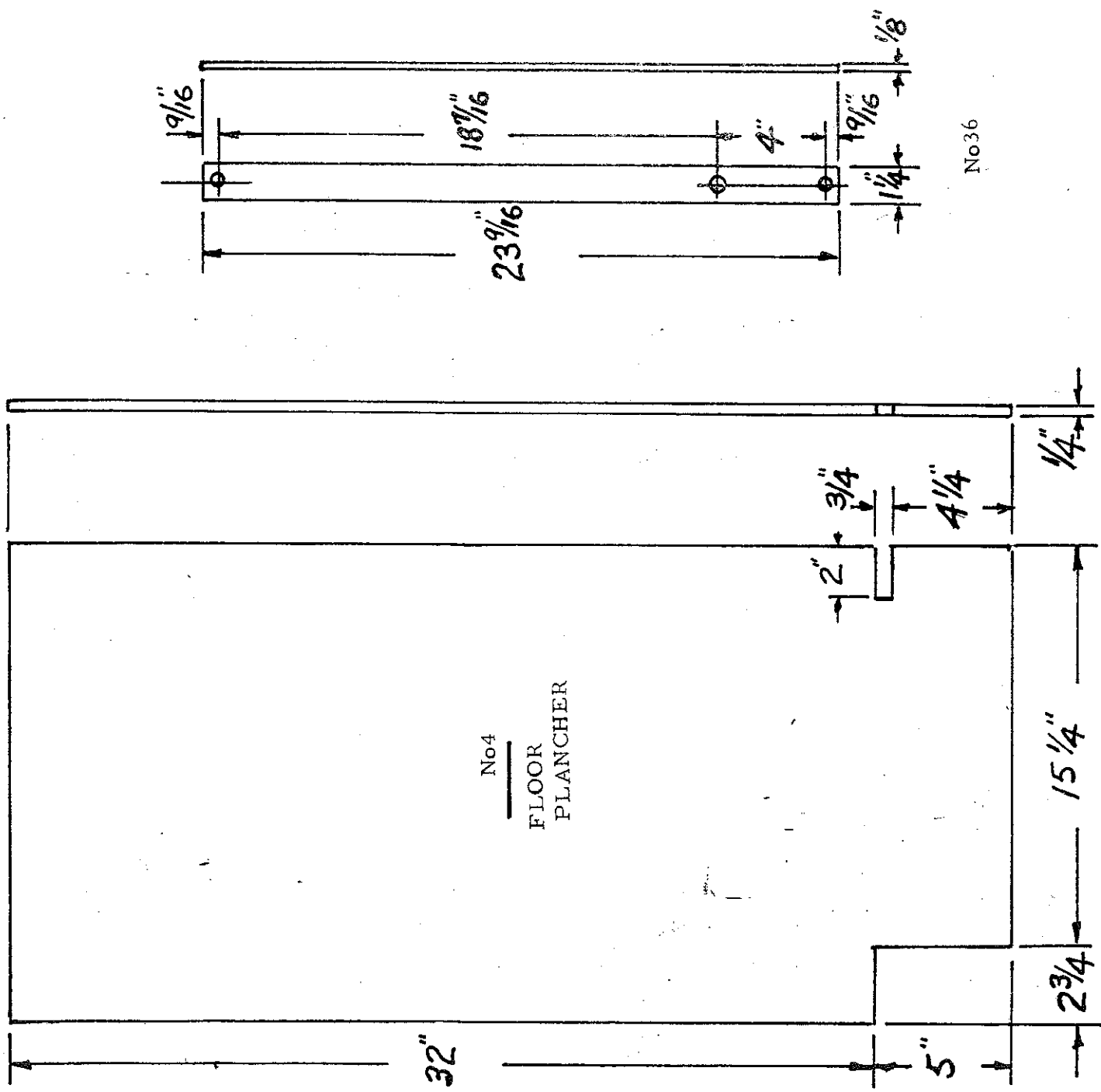


POWER PRODUCTS MOTOR CO.
1223 BORG AVE. TEMPERANCE, MI 48182

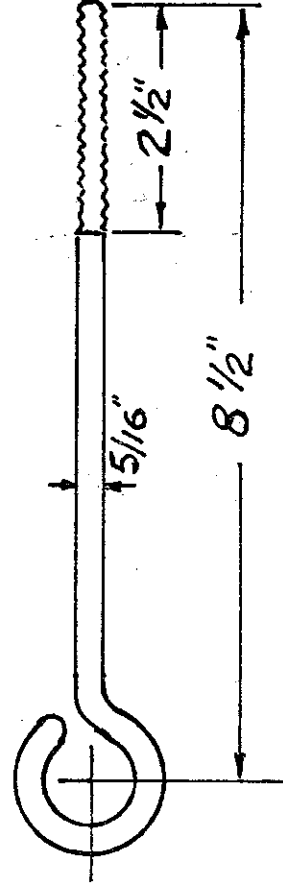
PLAN NO. 4



No2



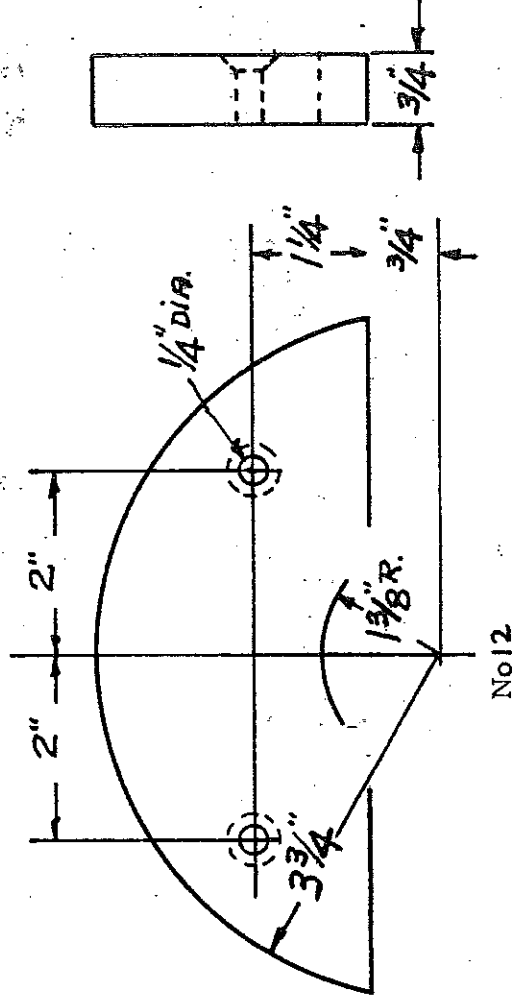
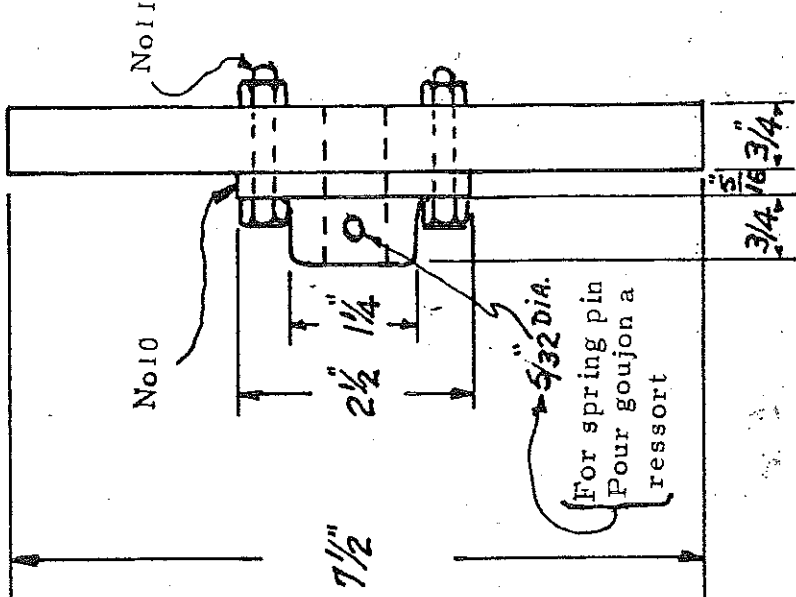
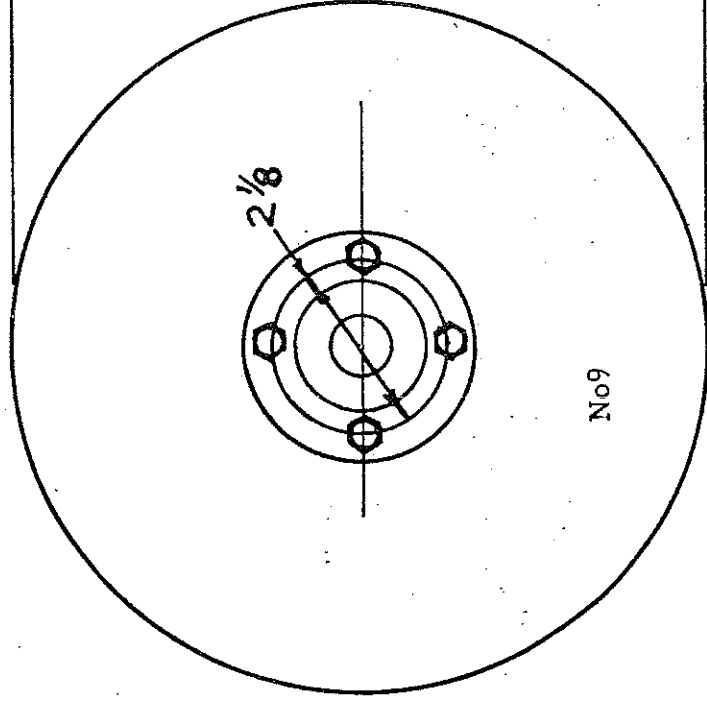
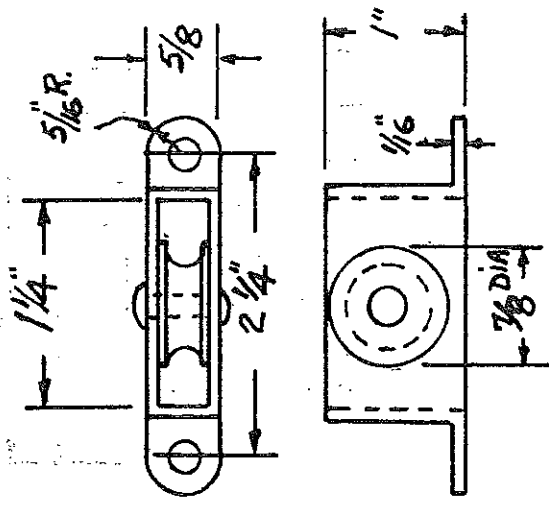
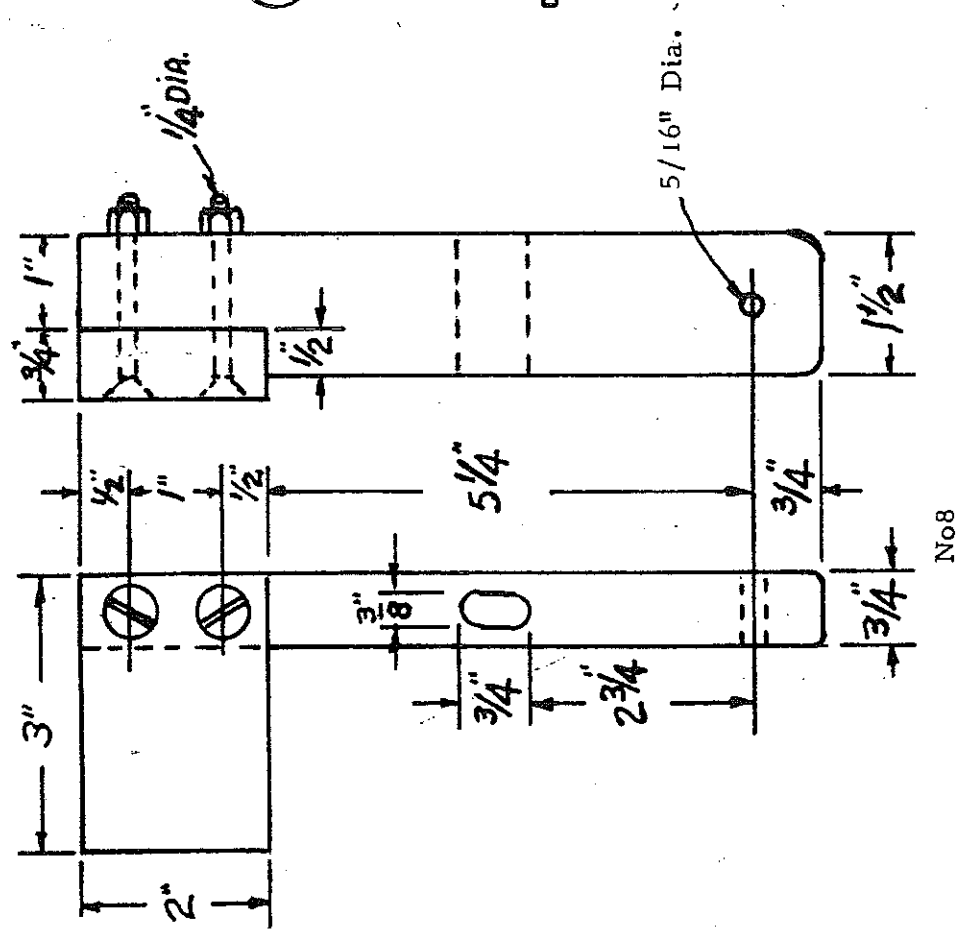
No36



No37

POWER PRODUCTS MOTOR CO.
 1223 BORG AVE. TEMPERANCE, MI 48182

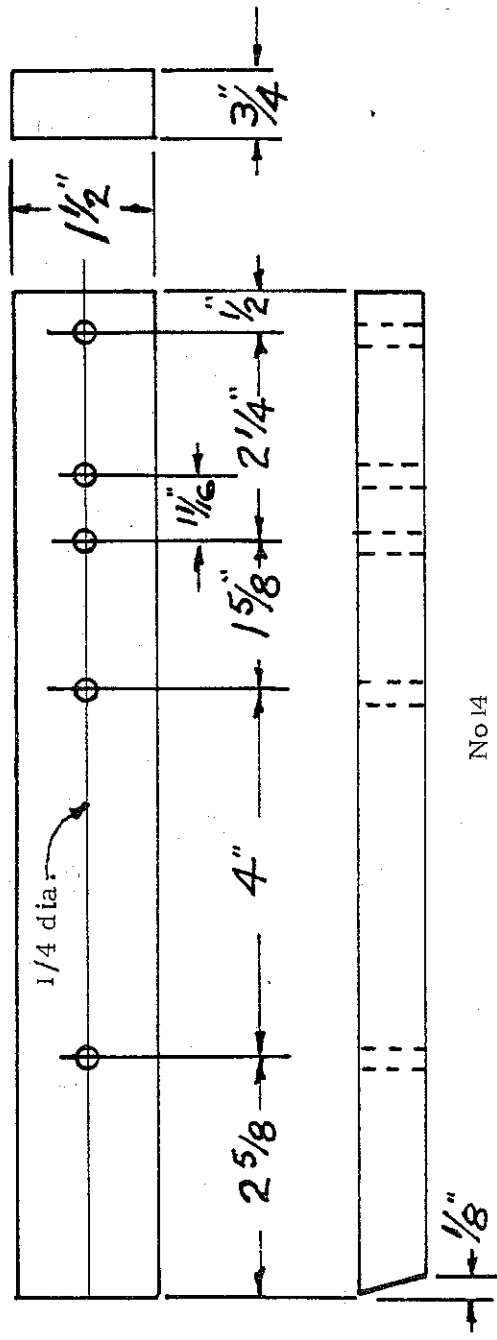
PLAN NO. 5



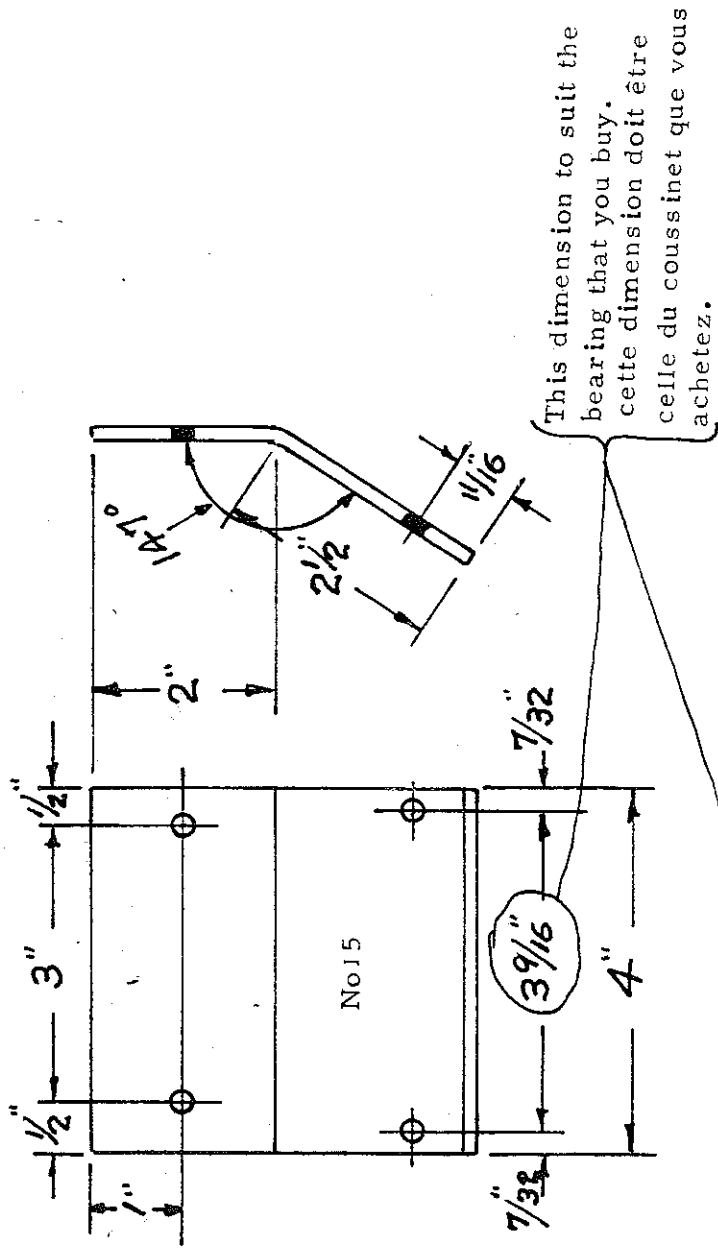
For spring pin
 Four goujon a
 ressort

POWER PRODUCTS MOTOR CO.
1223 BORG AVE. TEMPERANCE, MI 48182

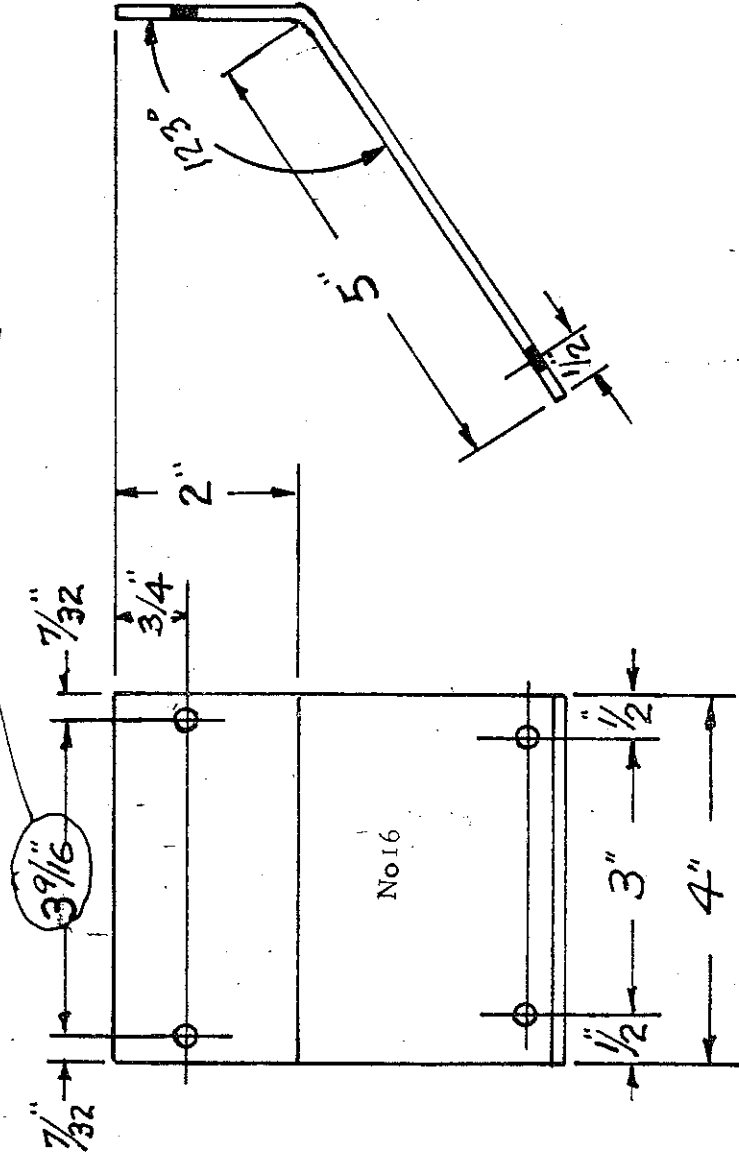
PLAN NO. 6



No 14



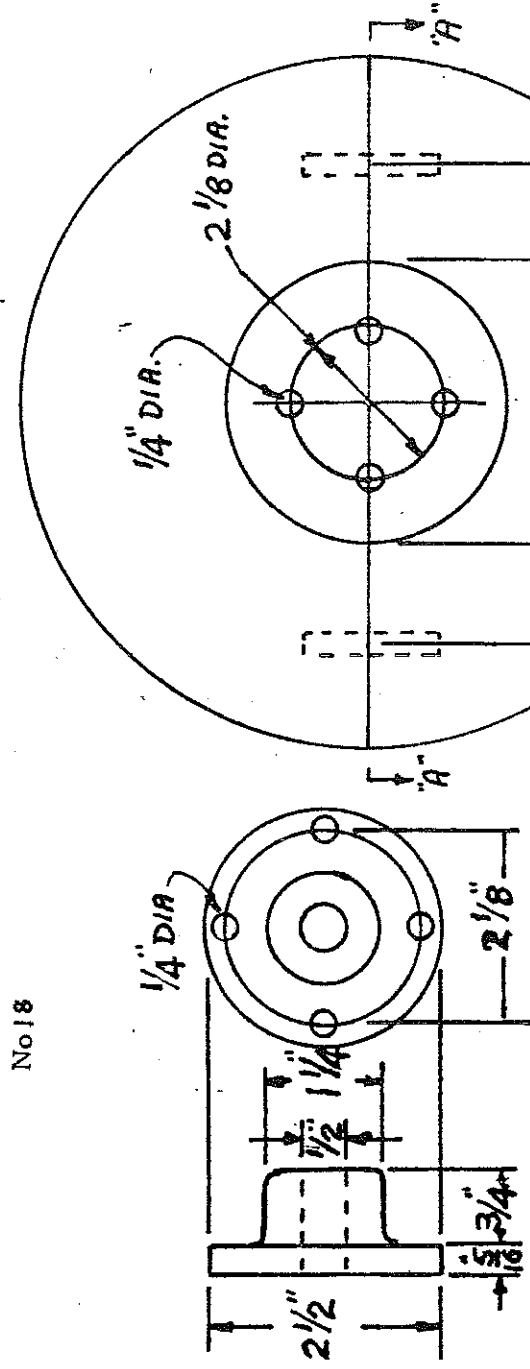
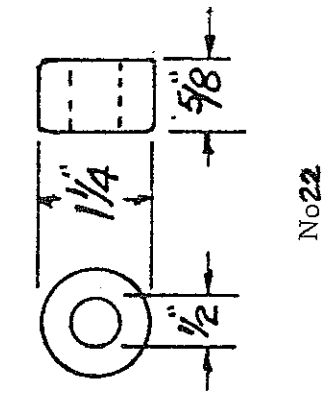
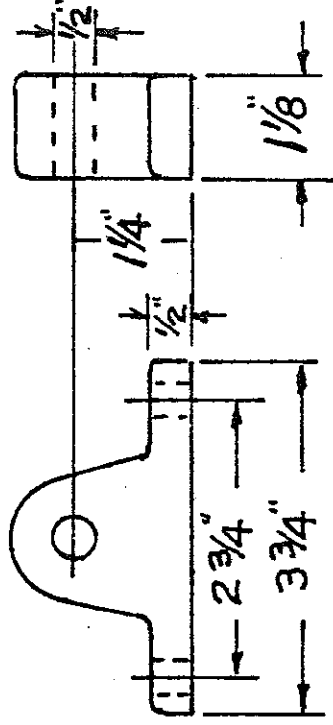
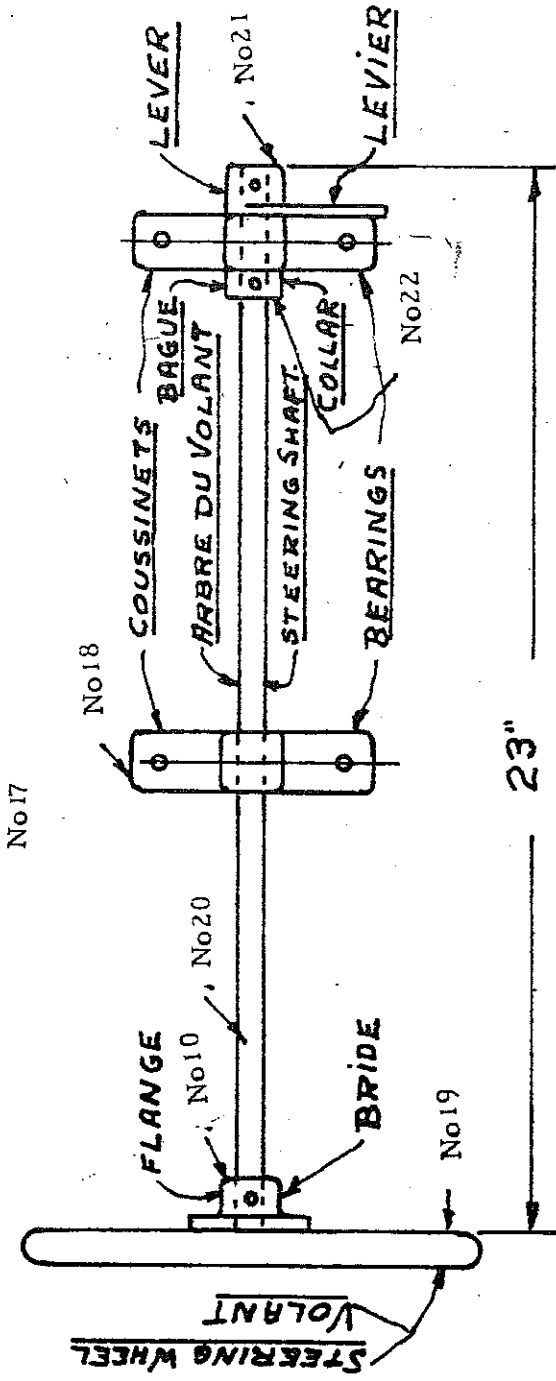
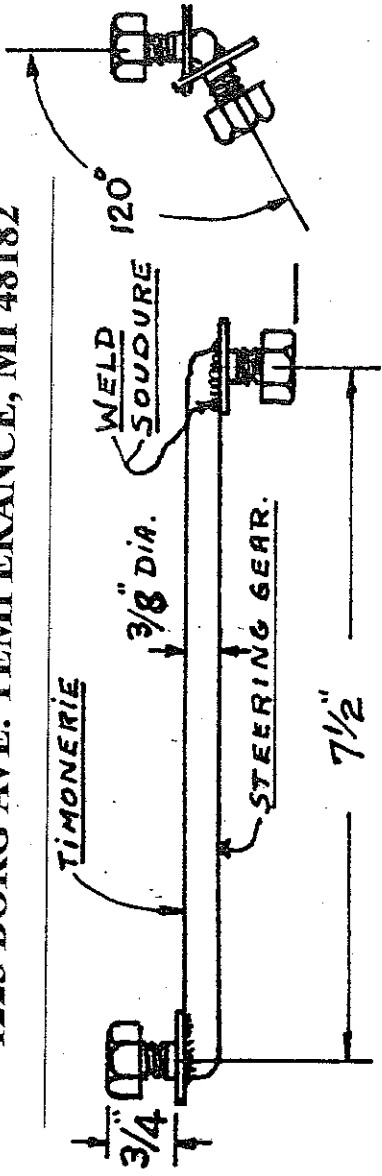
No 15



No 16

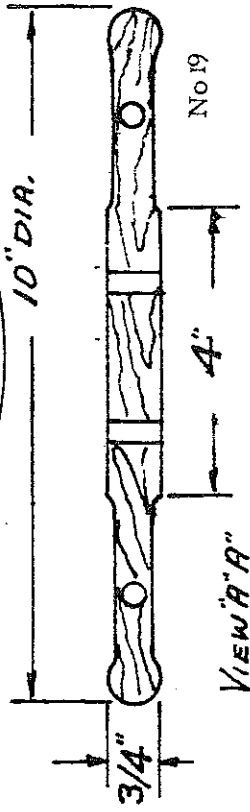
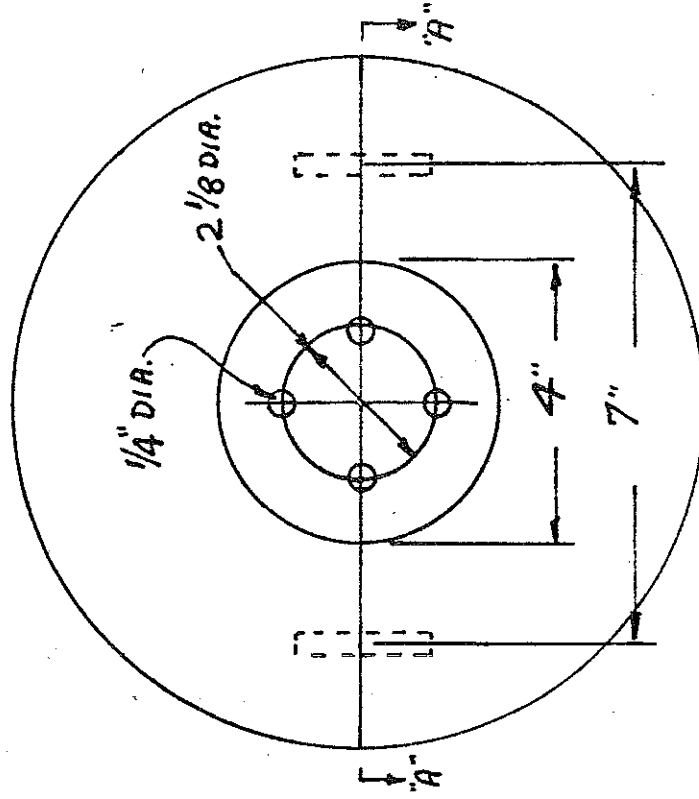
POWER PRODUCTS MOTOR CO.
1223 BORG AVE. TEMPERANCE, MI 48182

PLAN NO. 7



No 18

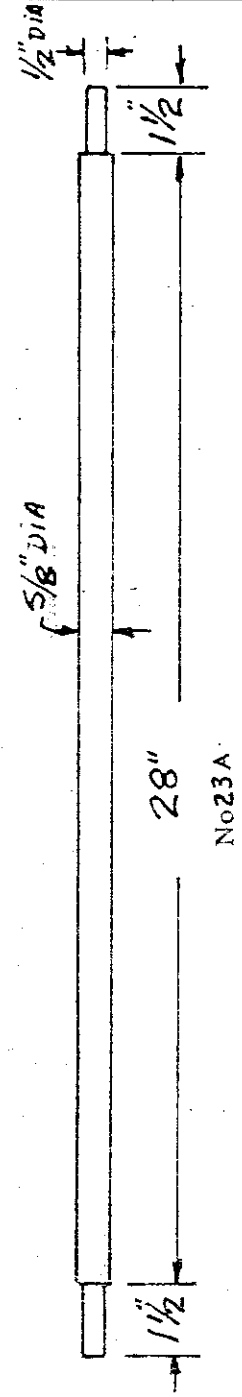
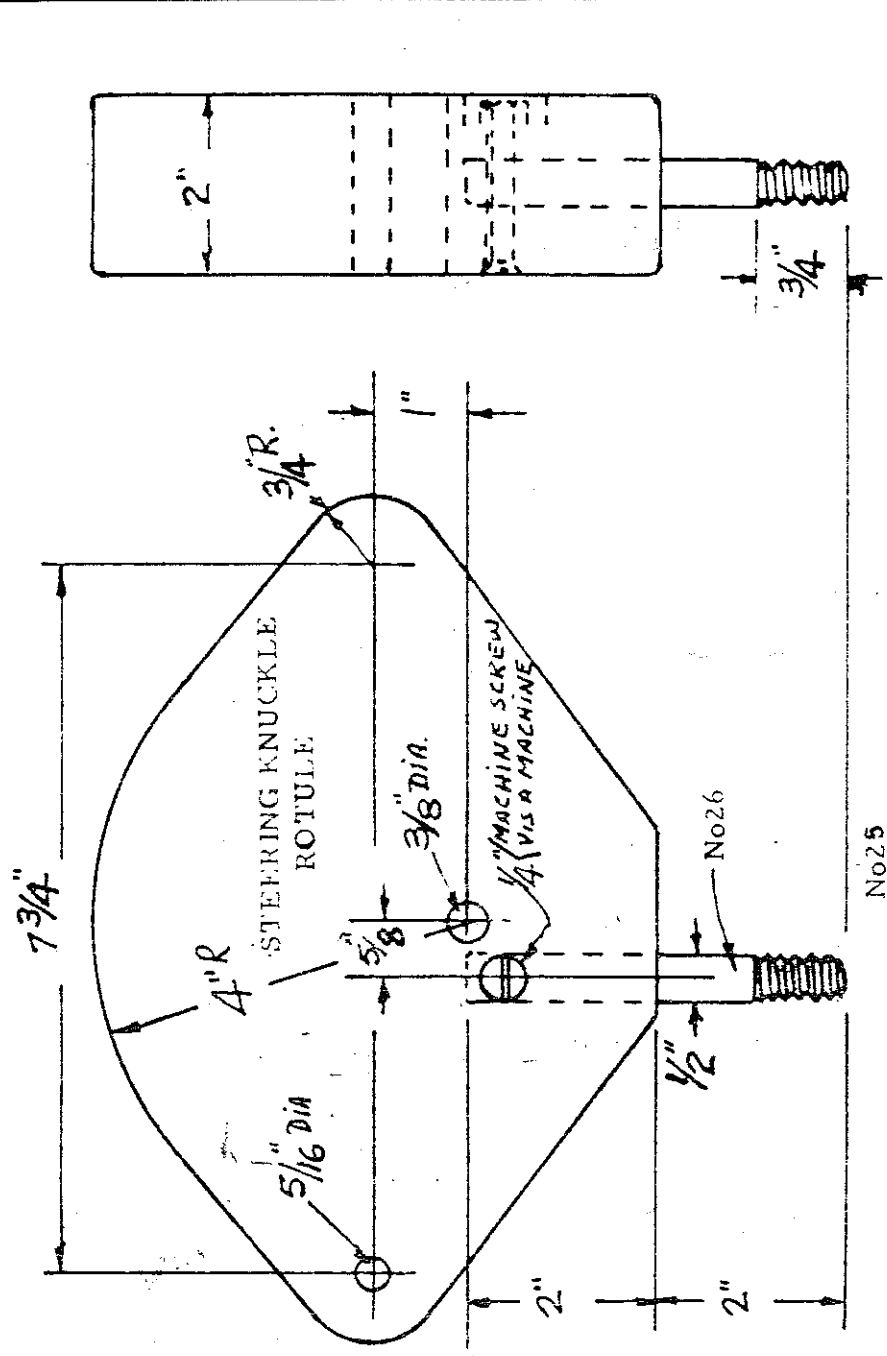
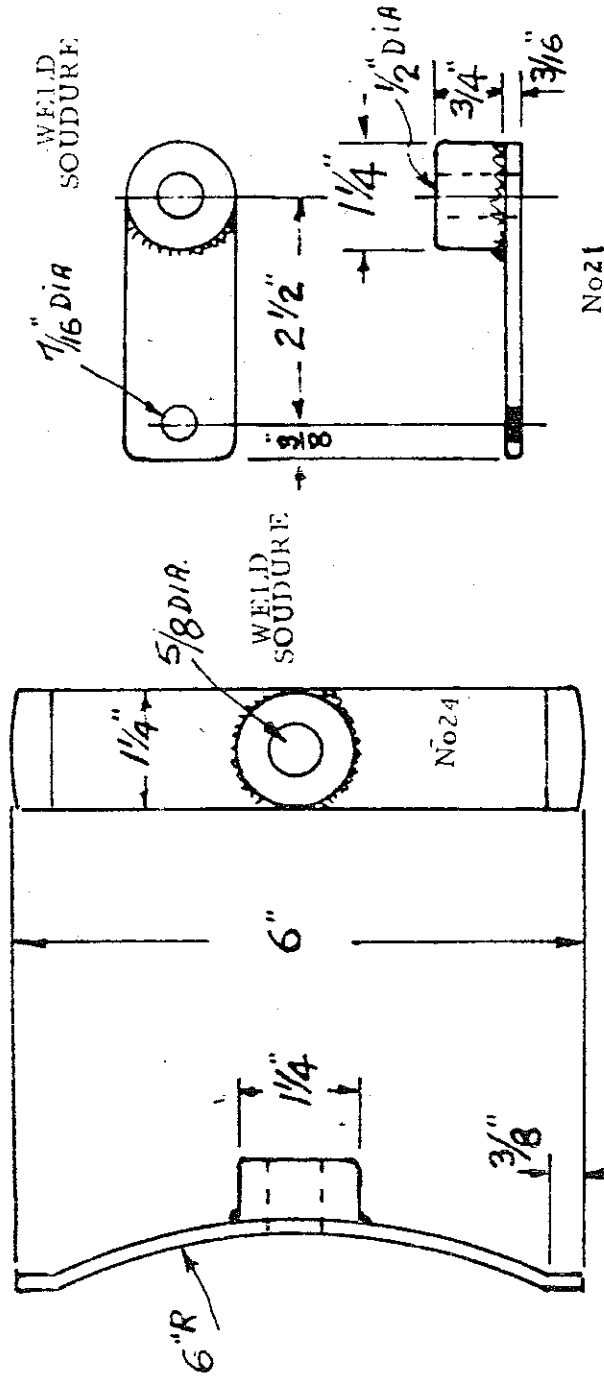
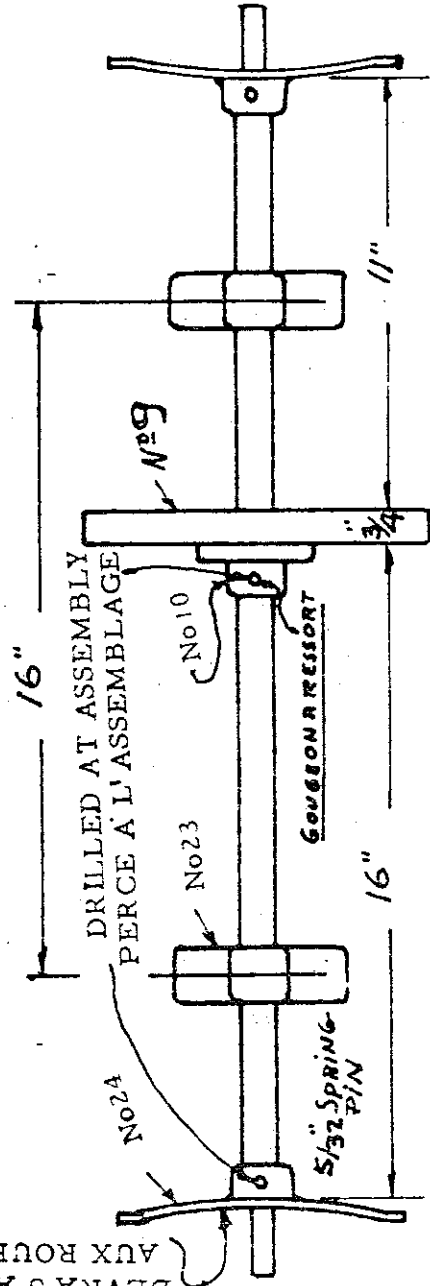
No 10



No 19

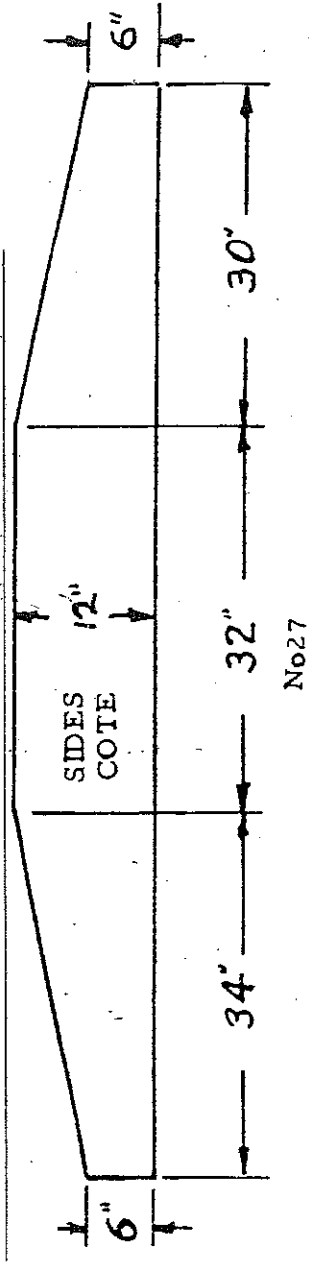
POWER PRODUCTS MOTOR CO.
 1223 BORG AVE. TEMPERANCE, MI 48182
 PLAN NO. 8

TO SUIT WHEELS
 DEBRA S ADAPTER
 AUX ROUES

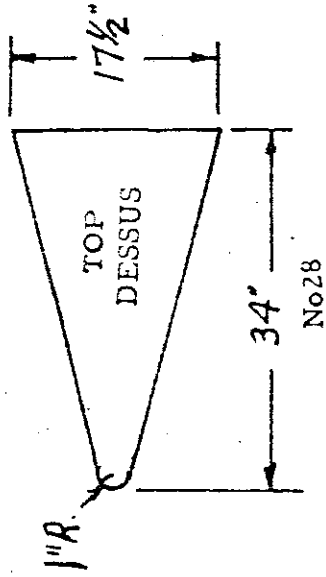


POWER PRODUCTS MOTOR CO.
1223 BORG AVE. TEMPERANCE, MI 48182

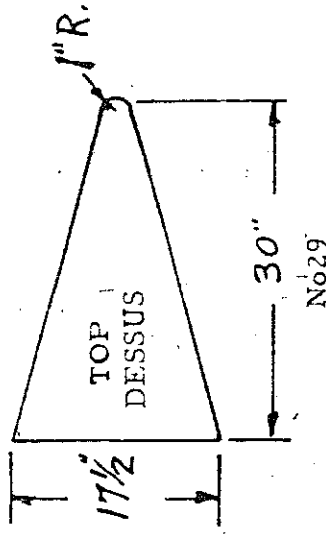
PLAN NO. 9



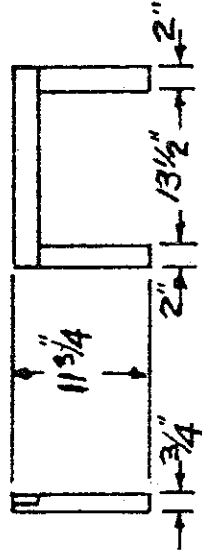
No27



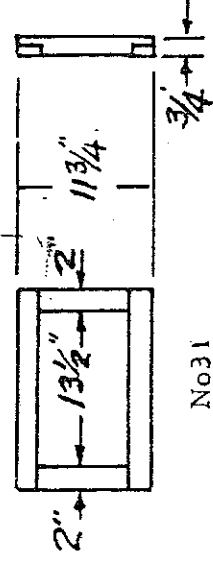
No28



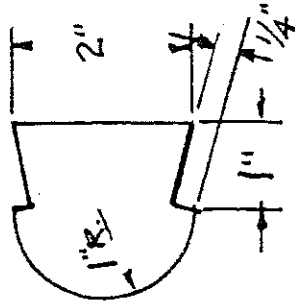
No29



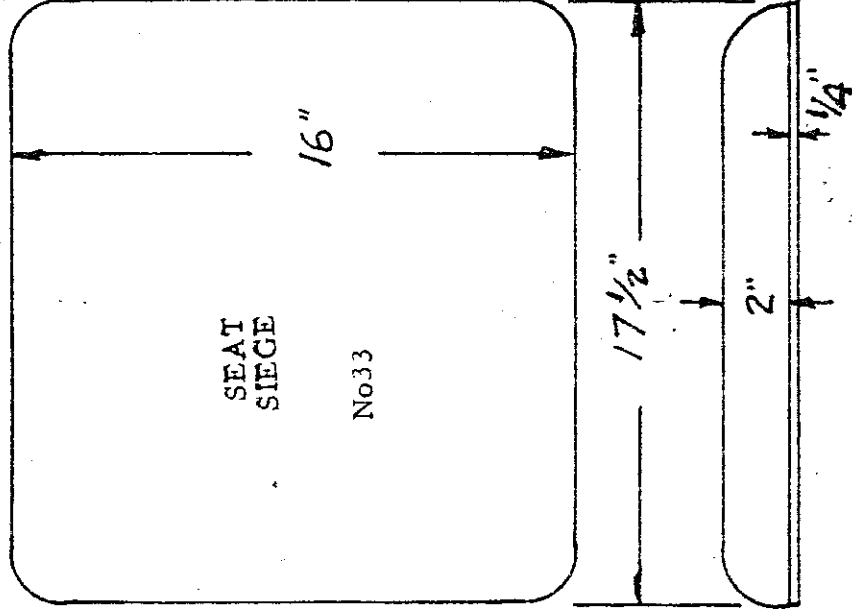
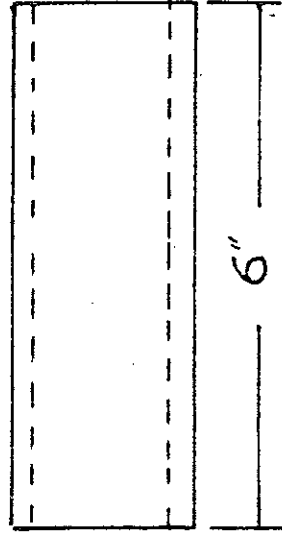
No30



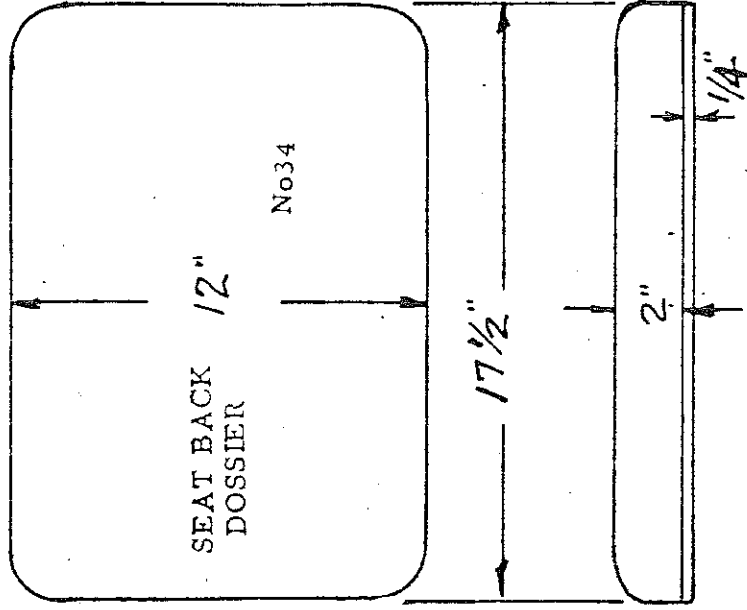
No31



No32



No33



No34